

OLFM3 Rabbit pAb

货号: AYP20770

产品信息

反应	Human,Mouse,Rat
宿主	Rabbit
克隆性	Polyclonal
预测反应	
应用	WB
推荐浓度	WB: 1:500 - 1:2000
理论分子量	
实测分子量	53kDa
形式	Liquid
保存条件	Store at -20°C. Avoid freeze / thaw cycles. Buffer: PBS with 0.01% thiomersal,50% glycerol,pH7.3.
偶联物	Unconjugated
阳性对照	U-251MG,PC-3,Mouse brain,Mouse eye,Mouse spinal cord,Rat eye
细胞定位	
纯化	Affinity purification

抗原信息

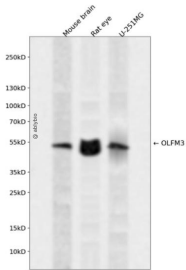
抗原信息	A synthetic peptide corresponding to a sequence within amino acids 200-300 of mouse OLFM3 (NP_694797.1).
序列	HQRVLSLETRLRDCMKKLTGKLMKITGPITVKTSGRFGAWMTDPLASEKNNRVWYMDSYTNKIVREYKSIADVFVSGAESRTYNLPFKWAGTNHVVYNG

靶点信息

研究背景	Predicted to be involved in eye photoreceptor cell development. Located in Golgi apparatus and extracellular space. Part of AMPA glutamate receptor complex. Is expressed in brain; eye; and head. Orthologous to human OLFM3 (olfactomedin 3).
基因ID	229759

基因名	
Swiss	
别名	Olfm3;B230206G02Rik;noelin-3;OLFM3

产品验证



Western blot analysis of OLFM3 expressed in Mouse brain,Rat eye,U-251MG using OLFM3 Rabbit pAb at 1:1000. Secondary antibody: HRP Goat Anti-Rabbit IgG (H+L) at 1:5000. Lysates/proteins: 30ug per lane. Blocking buffer: 5% non-fat dry milk in TBST. Detection: ECL Enhanced Kit. Exposure time: 120s.

实验步骤

访问官网浏览详情: www.ablybio.cn