

SLC24A4 Rabbit pAb

货号: AYP20758

产品信息

反应	Human,Mouse,Rat
宿主	Rabbit
克隆性	Polyclonal
预测反应	
应用	WB
推荐浓度	WB: 1:500 - 1:2000
理论分子量	52kDa/61kDa/67kDa/69kDa
实测分子量	52kDa/61kDa/67kDa/69kDa
形式	Liquid
保存条件	Store at -20°C. Avoid freeze / thaw cycles. Buffer: PBS with 0.01% thiomersal,50% glycerol,pH7.3.
偶联物	Unconjugated
阳性对照	mouse brain tissue, HeLa cells, mouse heart tissue
细胞定位	
纯化	Affinity purification

抗原信息

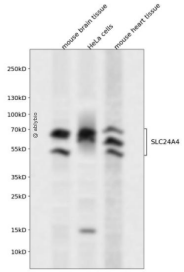
抗原信息	A synthetic peptide corresponding to a sequence within amino acids 200-300 of human SLC24A4 (NP_705932.2).
序列	WWAVCRDSVYYTISVIVLIVFIYDEQIVWWEGLVLIILYVFYILIMKYNVKMQAFFTVKQKSIANGNPVNSELEAGNDFYDGSYDDPSVPLLGQVKEKPQY

靶点信息

研究背景	This gene encodes a member of the potassium-dependent sodium/calcium exchanger protein family. Alternative splicing results in multiple transcript variants.
基因ID	123041
基因名	SLC24A4

Swiss	Q8NFF2
别名	SLC24A4;AI2A5;NCKX4;SHEP6;SLC24A2

产品验证



Western blot analysis of SLC24A4 expressed in mouse brain tissue, HeLa cells, mouse heart tissue using SLC24A4 Rabbit pAb at 1:1000. Secondary antibody: HRP Goat Anti-Rabbit IgG (H+L) at 1:5000. Lysates /proteins: 30ug per lane. Blocking buffer: 5% non-fat dry milk in TBST. Detection: ECL Enhanced Kit. Exposure time: 120s.

实验步骤

访问官网浏览详情: www.ablybio.cn