

# SLC26A11 Rabbit pAb

货号: **AYP20757**

## 产品信息

反应	Mouse
宿主	Rabbit
克隆性	Polyclonal
预测反应	
应用	WB
推荐浓度	<b>WB:</b> 1:500 - 1:2000
理论分子量	
实测分子量	70
形式	Liquid
保存条件	Store at -20°C. Avoid freeze / thaw cycles. Buffer: PBS with 0.01% thiomersal,50% glycerol,pH7.3.
偶联物	Unconjugated
阳性对照	
细胞定位	endoplasmic reticulum,extracellular exosome,Golgi apparatus,nucleoplasm,plasma membrane
纯化	Affinity purification

## 抗原信息

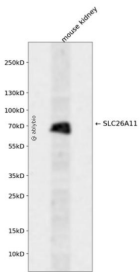
抗原信息	A synthetic peptide corresponding to a sequence within amino acids 500-600 of human SLC26A11 (NP_001159819.1).
序列	EILSRALEVSPPRCLVLECTHVCSIDYTVVLGLGELLQDFQKQGVAFVGLQVPVLRVLLSADLKGQYFSTLEEAEKHLRQEPGTQYPNIREDSILDQK

## 靶点信息

研究背景	This gene encodes a member of the solute linked carrier 26 family of anion exchangers. Members of this family of proteins are essential for numerous cellular functions including homeostasis and intracellular electrolyte balance. The encoded protein is a sodium independent sulfate transporter that is sensitive to the anion exchanger inhibitor 4,4'-diisothiocyanostilbene-2,2'-disulfonic acid. Alternate splicing results in multiple transcript variants.
基因ID	284129

基因名	SLC26A11
Swiss	Q86WA9
别名	SLC26A11

## 产品验证



Western blot analysis of SLC26A11 expressed in mouse kidney using SLC26A11 Rabbit pAb at 1:1000. Secondary antibody: HRP Goat Anti-Rabbit IgG (H+L) at 1:5000. Lysates/proteins: 30ug per lane. Blocking buffer: 5% non-fat dry milk in TBST. Detection: ECL Enhanced Kit. Exposure time: 120s.

## 实验步骤

访问官网浏览详情: [www.ablybio.cn](http://www.ablybio.cn)