

ARX Rabbit pAb

货号: **AYP20752**

产品信息

反应	Human,Mouse,Rat
宿主	Rabbit
克隆性	Polyclonal
预测反应	
应用	WB IHC IF/ICC
推荐浓度	WB: 1:500 - 1:2000 IHC: 1:50 - 1:200 IF/ICC: 1:50 - 1:200
理论分子量	
实测分子量	58kDa
形式	Liquid
保存条件	Store at -20°C. Avoid freeze / thaw cycles. Buffer: PBS with 0.01% thiomersal,50% glycerol,pH7.3.
偶联物	Unconjugated
阳性对照	SH-SY5Y,U-87MG,Mouse brain,Mouse testis,Rat brain
细胞定位	nucleus
纯化	Affinity purification

抗原信息

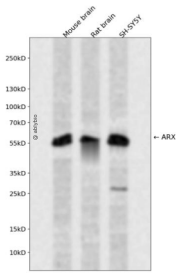
抗原信息	A synthetic peptide corresponding to a sequence within amino acids 500 to the C-terminus of human ARX (NP_620689.1).
序列	LLRQPTPAVEGAVASGALADPATAAADRRASSIAALRLKAKEHAAQLTQLNILPGTSTGKEVC

靶点信息

研究背景	This gene is a homeobox-containing gene expressed during development. The expressed protein contains two conserved domains, a C-peptide (or aristaless domain) and the prd-like class homeobox domain. It is a member of the group-II aristaless-related protein family whose members are expressed primarily in the central and/or peripheral nervous system. This gene is thought to be involved in CNS development. Expansion of a polyalanine tract and other mutations in this gene cause X-linked mental retardation and epilepsy.
------	--

基因ID	170302
基因名	ARX
Swiss	Q96QS3
别名	ARX;CT121;EIEE1;ISSX;MRX29;MRX32;MRX33;MRX36;MRX38;MRX43;MRX54;MRX76;MRX87;MRXS1;PRTS

产品验证



Western blot analysis of ARX expressed in Mouse brain,Rat brain,SH-SY5Y using ARX Rabbit pAb at 1:10 00. Secondary antibody: HRP Goat Anti-Rabbit IgG (H+L) at 1:5000. Lysates/proteins: 30ug per lane. Blo cking buffer: 5% non-fat dry milk in TBST. Detection: ECL Enhanced Kit. Exposure time: 120s.

实验步骤

访问官网浏览详情: www.ablybio.cn