

CERS5 Rabbit pAb

货号: **AYP20740**

产品信息

反应	Mouse,Rat
宿主	Rabbit
克隆性	Polyclonal
预测反应	
应用	WB
推荐浓度	WB: 1:500 - 1:2000
理论分子量	
实测分子量	50-55kD
形式	Liquid
保存条件	Store at -20°C. Avoid freeze / thaw cycles. Buffer: PBS with 0.01% thiomersal,50% glycerol,pH7.3.
偶联物	Unconjugated
阳性对照	
细胞定位	endoplasmic reticulum
纯化	Affinity purification

抗原信息

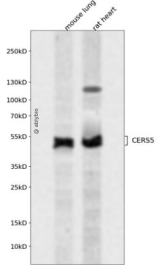
抗原信息	A synthetic peptide corresponding to a sequence within amino acids 1-100 of human CERS5 (NP_0012686 60.1).
序列	MMKPRPKRFIAKPCALCIGIEDSGPYQAQPNAILEKVFISITKYPDKKRLEGLSKQLDWNVRKIQCWFRHRRNQDKPPTLTKFCESMWRFTFYLCIFCYG

靶点信息

研究背景	This gene encodes a protein that belongs to the TLC (TRAM, LAG1 and CLN8 homology domains) family of proteins. The encoded protein functions in the synthesis of ceramide, a lipid molecule that is involved in a several cellular signaling pathways. Alternate splicing results in multiple transcript variants.
基因ID	91012

基因名	CERS5
Swiss	Q8N5B7
别名	CERS5;LASS5;Trh4

产品验证



Western blot analysis of CERS5 expressed in mouse lung, rat heart using CERS5 Rabbit pAb at 1:1000. Secondary antibody: HRP Goat Anti-Rabbit IgG (H+L) at 1:5000. Lysates/proteins: 30ug per lane. Blocking buffer: 5% non-fat dry milk in TBST. Detection: ECL Enhanced Kit. Exposure time: 120s.

实验步骤

访问官网浏览详情: www.ablybio.cn