

GPATCH2 Rabbit pAb

货号: **AYP20733**

产品信息

反应	Human,Mouse,Rat
宿主	Rabbit
克隆性	Polyclonal
预测反应	
应用	WB
推荐浓度	WB: 1:500 - 1:2000
理论分子量	
实测分子量	70kD
形式	Liquid
保存条件	Store at -20°C. Avoid freeze / thaw cycles. Buffer: PBS with 0.01% thiomersal,50% glycerol,pH7.3.
偶联物	Unconjugated
阳性对照	
细胞定位	nuclear speck,nucleolus
纯化	Affinity purification

抗原信息

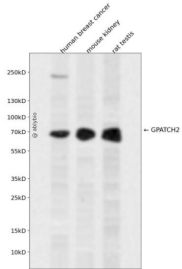
抗原信息	Recombinant fusion protein containing a sequence corresponding to amino acids 1-250 of human GPATCH2 (NP_001284683.1).
序列	MFGAAGRQPIGAPAAGNSWHFSRTMEELVHDLVSALESSEQARGGFAETGDHSRSISPLKRQARKRRGRKRRSYNVH HPWETGHCLSEGS DSSLEEPSKDYRENHNNKDHSDSDQMLVAKRRPSSNLNNNVRGKRPLWHESDFAVDNVGN RTLRRRRKVKRMAVDLPQDISNKRMTQPPEGCRDQDMDSDRAYQYQEFTKNKVKKRKLKIRQGPKIQDEGVVLESEET NQTNKDKMECEEQKV

靶点信息

研究背景	The gene encodes a nuclear factor that may play a role in spermatogenesis and in tumor growth during breast cancer. The encoded protein contains a G-patch domain with an RNA binding motif. Alternative splicing results in multiple transcript variants.
基因ID	55105

基因名	GPATCH2
Swiss	Q9NW75
别名	GPATCH2;CT110;GPATC2;PPP1R30

产品验证



Western blot analysis of GPATCH2 expressed in human breast cancer, mouse kidney, rat testis using GPATCH2 Rabbit pAb at 1:1000. Secondary antibody: HRP Goat Anti-Rabbit IgG (H+L) at 1:5000. Lysates/proteins: 30ug per lane. Blocking buffer: 5% non-fat dry milk in TBST. Detection: ECL Enhanced Kit. Exposure time: 120s.

实验步骤

访问官网浏览详情: www.ablybio.cn