

# MIXL1 Rabbit pAb

货号: **AYP20731**

## 产品信息

反应	Human,Mouse,Rat
宿主	Rabbit
克隆性	Polyclonal
预测反应	
应用	WB
推荐浓度	<b>WB:</b> 1:500 - 1:2000
理论分子量	
实测分子量	25kd
形式	Liquid
保存条件	Store at -20°C. Avoid freeze / thaw cycles. Buffer: PBS with 0.01% thiomersal,50% glycerol,pH7.3.
偶联物	Unconjugated
阳性对照	
细胞定位	nucleoplasm
纯化	Affinity purification

## 抗原信息

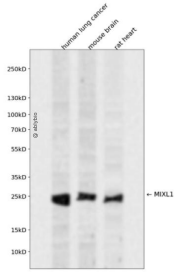
抗原信息	A synthetic peptide corresponding to a sequence within amino acids 150-232 of human MIXL1 (NP_11415 0.1).
序列	QPLARPEIILNHCAPGTETKCLKPQLPLEVDVNCLPEPNGVGGGSDSSSQGNFETCSPLSEDIGSKLDSWEEHIFSAFGN F

## 靶点信息

研究背景	Homeodomain proteins, such as MIXL1, are transcription factors that regulate cell fate during development (Hart et al., 2005 [PubMed 15982639]).
基因ID	83881
基因名	MIXL1

<b>Swiss</b>	Q9H2W2
别名	MIXL1;MILD1;MIX;MIXL

## 产品验证



Western blot analysis of MIXL1 expressed in human lung cancer,mouse brain,rat heart using MIXL1 Rabb it pAb at 1:1000. Secondary antibody: HRP Goat Anti-Rabbit IgG (H+L) at 1:5000. Lysates/proteins: 30ug per lane. Blocking buffer: 5% non-fat dry milk in TBST. Detection: ECL Enhanced Kit. Exposure time: 120 S.

## 实验步骤

访问官网浏览详情: [www.ablybio.cn](http://www.ablybio.cn)