

SEMA4A Rabbit pAb

货号: **AYP20721**

产品信息

反应	Human,Mouse,Rat
宿主	Rabbit
克隆性	Polyclonal
预测反应	
应用	WB IF/ICC
推荐浓度	WB: 1:500 - 1:2000 IF/ICC: 1:50 - 1:200
理论分子量	69kDa/83kDa
实测分子量	83kDa
形式	Liquid
保存条件	Store at -20°C. Avoid freeze / thaw cycles. Buffer: PBS with 0.01% thiomersal,50% glycerol,pH7.3.
偶联物	Unconjugated
阳性对照	HT-29
细胞定位	extracellular space,plasma membrane
纯化	Affinity purification

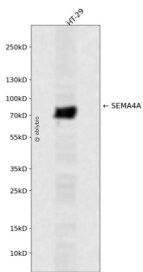
抗原信息

抗原信息	Recombinant fusion protein containing a sequence corresponding to amino acids 320-580 of human SEMA4A (NP_071762.2).
序列	IYAVFTSQWQVGGTRSSAVCAFSLLDIERVFKGKYKELNKETSRWTTYRGPETNPRPGSCSVGPSSDKALTFMKDHFLLMD EQVVGTPLLVKSGVEYTRLAVETAQGLDGHSHLVMYLGTGGSLHKAVVSGDSSAHLVEEIQLPDPEPVRNLQLAPTQG AVFVGFSGGVWRVPRANCSVYESCVDCLARDPHCAWDPESTRCCLLSAPNLNSWKQDMERGNPEWACASGPMSRSL RPQSRPQIIKEVLAVPNSILELPC

靶点信息

研究背景	This gene encodes a member of the semaphorin family of soluble and transmembrane proteins. Semaphorins are involved in numerous functions, including axon guidance, morphogenesis, carcinogenesis, and immunomodulation. The encoded protein is a single-pass type I membrane protein containing an immunoglobulin-like C2-type domain, a PSI domain and a sema domain. It inhibits axonal extension by providing local signals to specify territories inaccessible for growing axons. It is an activator of T-cell-mediated immunity and suppresses vascular endothelial growth factor (VEGF)-mediated endothelial cell migration and proliferation in vitro and angiogenesis in vivo. Mutations in this gene are associated with retinal degenerative diseases including retinitis pigmentosa type 35 (RP35) and cone-rod dystrophy type 10 (CORD10). Multiple alternatively spliced transcript variants encoding different isoforms have been identified.
基因ID	64218
基因名	SEMA4A
Swiss	Q9H3S1
别名	SEMA4A;CORD10;RP35;SEMAB;SEMB

产品验证



Western blot analysis of SEMA4A expressed in HT-29 using SEMA4A Rabbit pAb at 1:1000. Secondary antibody: HRP Goat Anti-Rabbit IgG (H+L) at 1:5000. Lysates/proteins: 30ug per lane. Blocking buffer: 5% non-fat dry milk in TBST. Detection: ECL Enhanced Kit. Exposure time: 120s.

实验步骤

访问官网浏览详情: www.ablybio.cn