

CLSPN Rabbit pAb

货号: **AYP20719**

产品信息

反应	Human
宿主	Rabbit
克隆性	Polyclonal
预测反应	
应用	WB
推荐浓度	WB: 1:500 - 1:2000
理论分子量	151kDa
实测分子量	275kDa
形式	Liquid
保存条件	Store at -20°C. Avoid freeze / thaw cycles. Buffer: PBS with 0.01% thiomersal,50% glycerol,pH7.3.
偶联物	Unconjugated
阳性对照	HepG2,Jurkat
细胞定位	Golgi apparatus,nucleoplasm,nucleus
纯化	Affinity purification

抗原信息

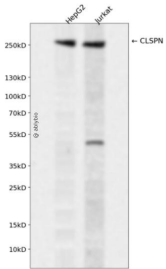
抗原信息	A synthetic peptide corresponding to a sequence within amino acids 650-750 of human CLSPN (NP_001177410.1).
序列	SVPKSLSSDSTLLLFKDSSSKMGYFPTEEKSETDENSGKQPSKLEDDSCSLLTKESSHNSSFELIGSTIPSYQPCNRQTGRGTSFFPTAGGFRSPSPGLF

靶点信息

研究背景	The product of this gene is an essential upstream regulator of checkpoint kinase 1 and triggers a checkpoint arrest of the cell cycle in response to replicative stress or DNA damage. The protein is also required for efficient DNA replication during a normal S phase. Multiple transcript variants encoding different isoforms have been found for this gene.
基因ID	63967

基因名	CLSPN
Swiss	Q9HAW4
别名	CLSPN;claspin

产品验证



Western blot analysis of CLSPN expressed in HepG2, Jurkat using CLSPN Rabbit pAb at 1:1000. Secondary antibody: HRP Goat Anti-Rabbit IgG (H+L) at 1:5000. Lysates/proteins: 30ug per lane. Blocking buffer: 5 % non-fat dry milk in TBST. Detection: ECL Enhanced Kit. Exposure time: 120s.

实验步骤

访问官网浏览详情: www.ablybio.cn