

TMEM165 Rabbit pAb

货号: **AYP20717**

产品信息

反应	Human
宿主	Rabbit
克隆性	Polyclonal
预测反应	
应用	WB
推荐浓度	WB: 1:500 - 1:2000
理论分子量	28kDa/34kDa
实测分子量	35kDa
形式	Liquid
保存条件	Store at -20°C. Avoid freeze / thaw cycles. Buffer: PBS with 0.01% thiomersal, 50% glycerol, pH7.3.
偶联物	Unconjugated
阳性对照	HeLa
细胞定位	Golgi apparatus
纯化	Affinity purification

抗原信息

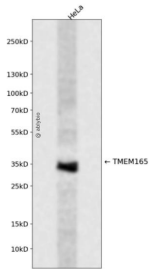
抗原信息	Recombinant fusion protein containing a sequence corresponding to amino acids 172-230 of human TME M165 (NP_060945.2).
序列	IRMLREGLKMSPEDEGQEELEEVQAELEKKKDEEFQRTKLLNGPGDVETGTSITVPQKKWL

靶点信息

研究背景	This gene encodes a predicted transmembrane protein with a perinuclear Golgi-like distribution in fibroblasts. Mutations in this gene are associated with the autosomal recessive congenital disorder of glycosylation, type IIk. Knockdown of this gene's expression causes decreased sialylation in HEK cells and suggests this gene plays a role in terminal Golgi glycosylation. Alternative splicing results in multiple transcript variants.
基因ID	55858

基因名	TMEM165
Swiss	Q9HC07
别名	TMEM165;CDG2K;FT27;GDT1;TMPT27;TPARL;TMEM165

产品验证



Western blot analysis of TMEM165 expressed in HeLa using TMEM165 Rabbit pAb at 1:1000. Secondary antibody: HRP Goat Anti-Rabbit IgG (H+L) at 1:5000. Lysates/proteins: 30ug per lane. Blocking buffer: 5% non-fat dry milk in TBST. Detection: ECL Enhanced Kit. Exposure time: 120s.

实验步骤

访问官网浏览详情: www.ablybio.cn