

WFDC1 Rabbit pAb

货号: **AYP20713**

产品信息

反应	Human,Mouse
宿主	Rabbit
克隆性	Polyclonal
预测反应	
应用	WB IF/ICC
推荐浓度	WB: 1:500 - 1:2000 IF/ICC: 1:50 - 1:200
理论分子量	
实测分子量	30kDa
形式	Liquid
保存条件	Store at -20°C. Avoid freeze / thaw cycles. Buffer: PBS with 0.01% thiomersal,50% glycerol,pH7.3.
偶联物	Unconjugated
阳性对照	293T,SGC-7901,Mouse brain,Mouse lung
细胞定位	extracellular space
纯化	Affinity purification

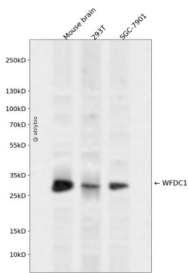
抗原信息

抗原信息	Recombinant fusion protein containing a sequence corresponding to amino acids 111-220 of human WFD C1 (NP_067020.2).
序列	PPVLDWLVPKPRWLGGNGWLLDGPEEVLQAEACSTTEDGAPELLCPSGYECHILSPGDVAEGIPNRGQCVKQRRQAD GRILRHKLYKEYPEGDSKNVAEPGRGQKHFQ

靶点信息

研究背景	This gene encodes a member of the WAP-type four disulfide core domain family. The WAP-type four-disulfide core domain contains eight cysteines forming four disulfide bonds at the core of the protein, and functions as a protease inhibitor in many family members. This gene is mapped to chromosome 16q24, an area of frequent loss of heterozygosity in cancers, including prostate, breast and hepatocellular cancers and Wilms' tumor. This gene is downregulated in many cancer types and may be involved in the inhibition of cell proliferation. The encoded protein may also play a role in the susceptibility of certain CD4 memory T cells to human immunodeficiency virus infection. Alternative splicing results in multiple transcript variants.
基因ID	58189
基因名	WFDC1
Swiss	Q9HC57
别名	WFDC1;PS20

产品验证



Western blot analysis of WFDC1 expressed in Mouse brain, 293T, SGC-7901 using WFDC1 Rabbit pAb at 1:1000. Secondary antibody: HRP Goat Anti-Rabbit IgG (H+L) at 1:5000. Lysates/proteins: 30ug per lane. Blocking buffer: 5% non-fat dry milk in TBST. Detection: ECL Enhanced Kit. Exposure time: 120s.

实验步骤

访问官网浏览详情: www.ablybio.cn