

# PHRF1 Rabbit pAb

货号: **AYP20712**

## 产品信息

反应	Human
宿主	Rabbit
克隆性	Polyclonal
预测反应	
应用	WB
推荐浓度	<b>WB:</b> 1:500 - 1:2000
理论分子量	
实测分子量	179kDa
形式	Liquid
保存条件	Store at -20°C. Avoid freeze / thaw cycles. Buffer: PBS with 0.01% thiomersal,50% glycerol,pH7.3.
偶联物	Unconjugated
阳性对照	Juakat,K-562,HepG2,HeLa
细胞定位	
纯化	Affinity purification

## 抗原信息

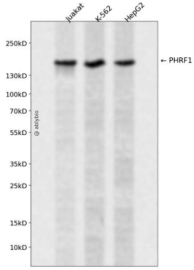
抗原信息	A synthetic peptide corresponding to a sequence within amino acids 1350-1450 of human PHRF1 (NP_001273512.1).
序列	KAEAPSSPDVAPAGKEDSPSASGRVQEAARPEEVVSQTPLLRSRALVKRVTWNLQESESSAPAEDRAPRAPLHRPQKPRE GAWDMEDVAPTGVRQVFSLEP

## 靶点信息

研究背景	Predicted to enable RNA polymerase binding activity. Predicted to be involved in mRNA processing and transcription by RNA polymerase II. Located in membrane.
基因ID	57661
基因名	PHRF1

<b>Swiss</b>	Q9P1Y6
别名	PHRF1;PPP1R125;RNF221

## 产品验证



Western blot analysis of PHRF1 expressed in Juakat, K-562, HepG2 using PHRF1 Rabbit pAb at 1:1000. Secondary antibody: HRP Goat Anti-Rabbit IgG (H+L) at 1:5000. Lysates/proteins: 30ug per lane. Blocking buffer: 5% non-fat dry milk in TBST. Detection: ECL Enhanced Kit. Exposure time: 120s.

## 实验步骤

访问官网浏览详情: [www.ablybio.cn](http://www.ablybio.cn)