

# PDP2 Rabbit pAb

货号: **AYP20711**

## 产品信息

反应	Mouse,Rat
宿主	Rabbit
克隆性	Polyclonal
预测反应	
应用	WB IF/ICC
推荐浓度	<b>WB:</b> 1:500 - 1:2000 <b>IF/ICC:</b> 1:50 - 1:200
理论分子量	59kDa
实测分子量	50kDa
形式	Liquid
保存条件	Store at -20°C. Avoid freeze / thaw cycles. Buffer: PBS with 0.01% thiomersal,50% glycerol,pH7.3.
偶联物	Unconjugated
阳性对照	Mouse heart,Mouse skeletal muscle,Rat heart
细胞定位	Mitochondrion matrix
纯化	Affinity purification

## 抗原信息

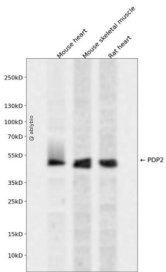
抗原信息	Recombinant fusion protein containing a sequence corresponding to amino acids 67-250 of human PDP2 ( NP_065837.1).
序列	STEEDDFHLQLSPEQINEVLRAGETTHKILDLESRVNSVLRFESNQLAANSPVEDRRGVASCLQTNGLMFGIFDGHGGH ACAQAVSERLFYYVAVSLMSHQTLLEHMEGAMESMKPLLILHWLKHGDSIYKDVTSVHLDHLRVYWQELLDLHMEMGL SIEEALMYSFQRLDSDISLEIQAPL

## 靶点信息

研究背景	This gene is a mitochondrial protein that functions as a phosphatase and is involved in the enzymatic resetting of the pyruvate dehydrogenase complex. Alternative splicing results in multiple transcript variants encoding the same protein.
基因ID	57546

基因名	PDP2
Swiss	Q9P2J9
别名	PDP2;PDPC 2;PPM2B;PPM2C2

## 产品验证



Western blot analysis of PDP2 expressed in Mouse heart, Mouse skeletal muscle, Rat heart using PDP2 Rabbit pAb at 1:1000. Secondary antibody: HRP Goat Anti-Rabbit IgG (H+L) at 1:5000. Lysates/proteins: 30ug per lane. Blocking buffer: 5% non-fat dry milk in TBST. Detection: ECL Enhanced Kit. Exposure time: 120s.

## 实验步骤

访问官网浏览详情: [www.ablybio.cn](http://www.ablybio.cn)