

SLC2A4RG Rabbit pAb

货号: **AYP20709**

产品信息

反应	Mouse
宿主	Rabbit
克隆性	Polyclonal
预测反应	
应用	WB
推荐浓度	WB: 1:500 - 1:2000
理论分子量	20kDa/30kDa/41kDa
实测分子量	20kDa/30kDa/41kDa
形式	Liquid
保存条件	Store at -20°C. Avoid freeze / thaw cycles. Buffer: PBS with 0.01% thiomersal, 50% glycerol, pH7.3.
偶联物	Unconjugated
阳性对照	
细胞定位	
纯化	Affinity purification

抗原信息

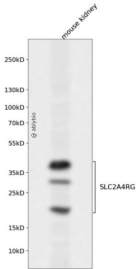
抗原信息	A synthetic peptide corresponding to a sequence within amino acids 100-200 of human SLC2A4RG (NP_064446.2).
序列	ARLDEVMAAAALTSLSLSTPLLLGAPVAAAFSPEPGLPEWKEALVRPPGSYSSSSNSGDWGWDLASDQSSPSTPSPPLPEAAHFLFGPETLRKRKSPAQVMF

靶点信息

研究背景	The protein encoded by this gene is a nuclear transcription factor involved in the activation of the solute carrier family 2 member 4 gene. The encoded protein interacts with another transcription factor, myocyte enhancer factor 2, to activate transcription of this gene.
基因ID	56731

基因名	SLC2A4RG
Swiss	Q9NR83
别名	SLC2A4RG;GEF;HDBP-1;HDBP1;Si-1-2;Si-1-2-19

产品验证



Western blot analysis of SLC2A4RG expressed in mouse kidney using SLC2A4RG Rabbit pAb at 1:1000. Secondary antibody: HRP Goat Anti-Rabbit IgG (H+L) at 1:5000. Lysates/proteins: 30ug per lane. Blocking buffer: 5% non-fat dry milk in TBST. Detection: ECL Enhanced Kit. Exposure time: 120s.

实验步骤

访问官网浏览详情: www.ablybio.cn