

AJAP1 Rabbit pAb

货号: **AYP20707**

产品信息

反应	Human,Mouse,Rat
宿主	Rabbit
克隆性	Polyclonal
预测反应	
应用	WB
推荐浓度	WB: 1:500 - 1:2000
理论分子量	
实测分子量	45kDa
形式	Liquid
保存条件	Store at -20°C. Avoid freeze / thaw cycles. Buffer: PBS with 0.01% thiomersal,50% glycerol,pH7.3.
偶联物	Unconjugated
阳性对照	HeLa,293T,Mouse pancreas
细胞定位	adherens junction,apical plasma membrane,basolateral plasma membrane,cell-cell contact zone,cytoplasmic side of plasma membrane,plasma membrane
纯化	Affinity purification

抗原信息

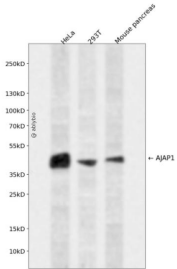
抗原信息	A synthetic peptide corresponding to a sequence within amino acids 300-400 of human AJAP1 (NP_061324.1).
序列	TLVLKNCCAQSGNTRRNSHQKTNQEEESCQNLTDFPSARVPSSLDIFTAYNETLQCSHECVRASVPVYTDELHSTTGEYKSTFNGNRPSSSDRHLIPVA

靶点信息

研究背景	Plays a role in cell adhesion and cell migration.
基因ID	55966
基因名	AJAP1

Swiss	Q9UKB5
别名	AJAP1;MOT8;SHREW-1;SHREW1

产品验证



Western blot analysis of AJAP1 expressed in HeLa,293T,Mouse pancreas using AJAP1 Rabbit pAb at 1:10 00. Secondary antibody: HRP Goat Anti-Rabbit IgG (H+L) at 1:5000. Lysates/proteins: 30ug per lane. Blocking buffer: 5% non-fat dry milk in TBST. Detection: ECL Enhanced Kit. Exposure time: 120s.

实验步骤

访问官网浏览详情: www.ablybio.cn