

# EDEM2 Rabbit pAb

货号: **AYP20706**

## 产品信息

反应	Human,Mouse
宿主	Rabbit
克隆性	Polyclonal
预测反应	
应用	WB IF/ICC
推荐浓度	<b>WB:</b> 1:500 - 1:2000 <b>IF/ICC:</b> 1:50 - 1:200
理论分子量	
实测分子量	70kDa
形式	Liquid
保存条件	Store at -20°C. Avoid freeze / thaw cycles. Buffer: PBS with 0.01% thiomersal,50% glycerol,pH7.3.
偶联物	Unconjugated
阳性对照	A375,HepG2
细胞定位	endoplasmic reticulum,endoplasmic reticulum lumen,endoplasmic reticulum quality control compartment
纯化	Affinity purification

## 抗原信息

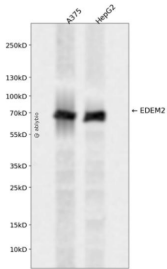
抗原信息	Recombinant fusion protein containing a sequence corresponding to amino acids 399-578 of human EDEM2 (NP_060687.2).
序列	SIEKISKVECGFATIKDLRDHKLDNRMESFFLAETVKYLYLLFDPTNFIHNNGSTFDVITPYGECILGAGGYIFNTEAHPIDPALHCCQRLKEEQWEVEDLMREFYSLKRSRSKFQKNTVSSGPWEPPARPGTLFSPENHDQARERKPAKQKVPLLSCPSQPFTSKLALLGQVFLDSS

## 靶点信息

研究背景	In the endoplasmic reticulum (ER), misfolded proteins are retrotranslocated to the cytosol and degraded by the proteasome in a process known as ER-associated degradation (ERAD). EDEM2 belongs to a family of proteins involved in ERAD of glycoproteins (Mast et al., 2005 [PubMed 15537790]).
基因ID	55741

基因名	EDEM2
Swiss	Q9BV94
别名	EDEM2;C20orf31;C20orf49;bA4204.1

## 产品验证



Western blot analysis of EDEM2 expressed in A375, HepG2 using EDEM2 Rabbit pAb at 1:1000. Secondary antibody: HRP Goat Anti-Rabbit IgG (H+L) at 1:5000. Lysates/proteins: 30ug per lane. Blocking buffer: 5 % non-fat dry milk in TBST. Detection: ECL Enhanced Kit. Exposure time: 120s.

## 实验步骤

访问官网浏览详情: [www.ablybio.cn](http://www.ablybio.cn)