

RAPGEF6 Rabbit pAb

货号: **AYP20705**

产品信息

反应	Mouse,Rat
宿主	Rabbit
克隆性	Polyclonal
预测反应	
应用	WB
推荐浓度	WB: 1:500 - 1:2000
理论分子量	
实测分子量	179kDa
形式	Liquid
保存条件	Store at -20°C. Avoid freeze / thaw cycles. Buffer: PBS with 0.01% thiomersal,50% glycerol,pH7.3.
偶联物	Unconjugated
阳性对照	Mouse brain,Rat brain
细胞定位	apical plasma membrane,centrosome,cytosol,plasma membrane
纯化	Affinity purification

抗原信息

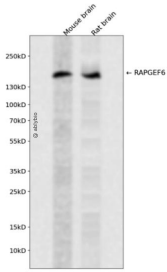
抗原信息	Recombinant fusion protein containing a sequence corresponding to amino acids 145-240 of human RAP GEF6 (NP_001157858).
序列	INYKGERQTITDDVEVNSYLSLPADLTCKMHLTENPHPQVTHVSSSQSGCSIASDSGSSSLSDIYQATESEVGDVDLTRLPE GPVDSSEDEEEDDEE

靶点信息

研究背景	Guanine nucleotide exchange factor (GEF for Rap1A, Rap2A and M-Ras GTPases. Does not interact with c AMP.
基因ID	51735
基因名	RAPGEF6

Swiss	Q8TEU7
别名	RAPGEF6;KIA001LB;PDZ-GEF2;PDZGEF2;RA-GEF-2;RAGEF2

产品验证



Western blot analysis of RAPGEF6 expressed in Mouse brain,Rat brain using RAPGEF6 Rabbit pAb at 1:10 00. Secondary antibody: HRP Goat Anti-Rabbit IgG (H+L) at 1:5000. Lysates/proteins: 30ug per lane. Blocking buffer: 5% non-fat dry milk in TBST. Detection: ECL Enhanced Kit. Exposure time: 120s.

实验步骤

访问官网浏览详情: www.ablybio.cn