

PINX1 Rabbit pAb

货号: **AYP20699**

产品信息

反应	Human
宿主	Rabbit
克隆性	Polyclonal
预测反应	
应用	WB
推荐浓度	WB: 1:500 - 1:2000
理论分子量	19kDa/37kDa
实测分子量	43kDa
形式	Liquid
保存条件	Store at -20°C. Avoid freeze / thaw cycles. Buffer: PBS with 0.01% thiomersal, 50% glycerol, pH7.3.
偶联物	Unconjugated
阳性对照	HeLa, Jurkat, HepG2
细胞定位	mitochondrion, nuclear chromosome, nucleolus, nucleoplasm, spindle
纯化	Affinity purification

抗原信息

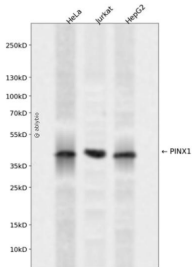
抗原信息	Recombinant fusion protein containing a sequence corresponding to amino acids 127-328 of human PINX 1 (NP_060354.4).
序列	MKFTKGDLSRSKTDLDCIFGKRQSKTPEGDASPSTPEENETTTTSAFTIQEYFAKRMAALKNKPVVPVPGSDISETQV ERKRGKKRNKEATGKDVESYLQPKAKRHTEGKPERAEAQERVAKKKSAPAEELRGPCWDQSSKASAQDAGDHSVQPPE GRDFTLKPCKRRGKKKLQKPVEIAEDATLEETLVKKKKKKDSSK

靶点信息

研究背景	Microtubule-binding protein essential for faithful chromosome segregation. Mediates TRF1 and TERT accumulation in nucleolus and enhances TRF1 binding to telomeres. Inhibits telomerase activity. May inhibit cell proliferation and act as tumor suppressor.
基因ID	54984

基因名	PINX1
Swiss	Q96BK5
别名	PINX1;LPTL;LPTS

产品验证



Western blot analysis of PINX1 expressed in HeLa, Jurkat, HepG2 using PINX1 Rabbit pAb at 1:1000. Secondary antibody: HRP Goat Anti-Rabbit IgG (H+L) at 1:5000. Lysates/proteins: 30ug per lane. Blocking buffer: 5% non-fat dry milk in TBST. Detection: ECL Enhanced Kit. Exposure time: 120s.

实验步骤

访问官网浏览详情: www.ablybio.cn