

KLF13 Rabbit pAb

货号: **AYP20691**

产品信息

反应	Human,Mouse,Rat
宿主	Rabbit
克隆性	Polyclonal
预测反应	
应用	WB
推荐浓度	WB: 1:500 - 1:1000
理论分子量	31kDa
实测分子量	45KDa
形式	Liquid
保存条件	Store at -20°C. Avoid freeze / thaw cycles. Buffer: PBS with 0.01% thiomersal,50% glycerol,pH7.3.
偶联物	Unconjugated
阳性对照	HepG2,K-562,Jurkat,BxPC-3,Mouse lung,Mouse spleen,Rat lung,Rat spleen
细胞定位	nucleus
纯化	Affinity purification

抗原信息

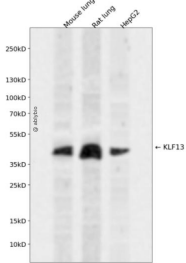
抗原信息	A synthetic peptide corresponding to a sequence within amino acids 100-200 of human KLF13 (NP_057079.2).
序列	PPAPEPTSPGAEGAAAAPPSPAWSEPEPEAGLEPEREPGPAGSGEPGLRQRVRRGRSRADLESPQRKHKCHYAGCEKVYGKSSHLKAHLRTHHTGERPFACS

靶点信息

研究背景	KLF13 belongs to a family of transcription factors that contain 3 classical zinc finger DNA-binding domain s consisting of a zinc atom tetrahedrally coordinated by 2 cysteines and 2 histidines (C2H2 motif). These t ranscription factors bind to GC-rich sequences and related GT and CACCC boxes (Schoy et al., 2000 [Pub Med 11087666]).
基因ID	51621

基因名	KLF13
Swiss	Q9Y2Y9
别名	KLF13;BTEB3;FKLF2;NSLP1;RFLAT-1;RFLAT1

产品验证



Western blot analysis of KLF13 expressed in Mouse lung,Rat lung,HepG2 using KLF13 Rabbit pAb at 1:1 000. Secondary antibody: HRP Goat Anti-Rabbit IgG (H+L) at 1:5000. Lysates/proteins: 30ug per lane. Blocking buffer: 5% non-fat dry milk in TBST. Detection: ECL Enhanced Kit. Exposure time: 120s.

实验步骤

访问官网浏览详情: www.ablybio.cn