

PRR16 Rabbit pAb

货号: **AYP20690**

产品信息

反应	Mouse
宿主	Rabbit
克隆性	Polyclonal
预测反应	
应用	WB
推荐浓度	WB: 1:500 - 1:2000
理论分子量	
实测分子量	33kDa
形式	Liquid
保存条件	Store at -20°C. Avoid freeze / thaw cycles. Buffer: PBS with 0.01% thiomersal, 50% glycerol, pH7.3.
偶联物	Unconjugated
阳性对照	Mouse brain, Mouse kidney
细胞定位	
纯化	Affinity purification

抗原信息

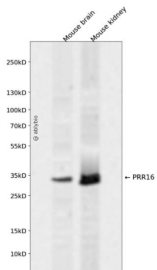
抗原信息	A synthetic peptide corresponding to a sequence within amino acids 50-150 of human PRR16 (NP_001295 016.1).
序列	PNPPPPRLTPVKCEDPKRVVPTANPVKTNGTLLRNGGLPGGPNKIPNGDICCIPNSNLDKAPVQLLMHRPEKDRCQPAG PRERVRFNEKVQYHGYPDC

靶点信息

研究背景	Regulator of cell size that promotes cell size increase independently of mTOR and Hippo signaling pathways. Acts by stimulating the translation of specific mRNAs, including those encoding proteins affecting mitochondrial functions. Increases mitochondrial mass and respiration.
基因ID	51334

基因名	PRR16
Swiss	Q569H4
别名	PRR16;DSC54;LARGEN

产品验证



Western blot analysis of PRR16 expressed in Mouse brain, Mouse kidney using PRR16 Rabbit pAb at 1:1000. Secondary antibody: HRP Goat Anti-Rabbit IgG (H+L) at 1:5000. Lysates/proteins: 30ug per lane. Blocking buffer: 5% non-fat dry milk in TBST. Detection: ECL Enhanced Kit. Exposure time: 120s.

实验步骤

访问官网浏览详情: www.ablybio.cn