

FCF1 Rabbit pAb

货号: **AYP20686**

产品信息

反应	Human,Rat
宿主	Rabbit
克隆性	Polyclonal
预测反应	
应用	WB IHC IF/ICC
推荐浓度	WB: 1:500 - 1:2000 IHC: 1:50 - 1:200 IF/ICC: 1:50 - 1:200
理论分子量	
实测分子量	23kDa
形式	Liquid
保存条件	Store at -20°C. Avoid freeze / thaw cycles. Buffer: PBS with 0.01% thiomersal,50% glycerol,pH7.3.
偶联物	Unconjugated
阳性对照	293T
细胞定位	nucleolus,nucleoplasm
纯化	Affinity purification

抗原信息

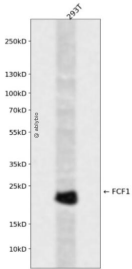
抗原信息	A synthetic peptide corresponding to a sequence within amino acids 100-198 of human FCF1 (NP_057046 .1).
序列	PCITDCVMAEIEKLGQKYRVALRIAKDPRFERLPCTHKGTYADDCLVQRVTQHKCYIVATVDRDLKRRIRKIPGVPIMYISNHR YNIERMPDDYGAPRF

靶点信息

研究背景	Essential protein involved in pre-rRNA processing and 40S ribosomal subunit assembly.
基因ID	51077
基因名	FCF1

Swiss	Q9Y324
别名	FCF1;Bka;C14orf111;CGI-35;UTP24

产品验证



Western blot analysis of FCF1 expressed in 293T using FCF1 Rabbit pAb at 1:1000. Secondary antibody: HRP Goat Anti-Rabbit IgG (H+L) at 1:5000. Lysates/proteins: 30ug per lane. Blocking buffer: 5% non-fat dry milk in TBST. Detection: ECL Enhanced Kit. Exposure time: 120s.

实验步骤

访问官网浏览详情: www.ablybio.cn