

CPSF1 Rabbit pAb

货号: **AYP20682**

产品信息

反应	Human,Mouse
宿主	Rabbit
克隆性	Polyclonal
预测反应	
应用	WB
推荐浓度	WB: 1:500 - 1:2000
理论分子量	160kDa
实测分子量	170kDa/185kDa
形式	Liquid
保存条件	Store at -20°C. Avoid freeze / thaw cycles. Buffer: PBS with 0.01% thiomersal,50% glycerol,pH7.3.
偶联物	Unconjugated
阳性对照	293T,NIH/3T3,Mouse liver
细胞定位	nucleoplasm,nucleus
纯化	Affinity purification

抗原信息

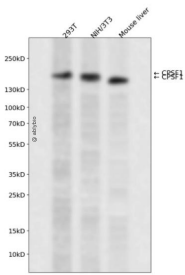
抗原信息	Recombinant fusion protein containing a sequence corresponding to amino acids 700-950 of human CPSF 1 (NP_037423.2).
序列	LYRDLSGMFTTESRLGGARDELGGRSGPEAELGSETSPVDDEEEMLYGDSGSLFSPSKEEARSSQPPADRDPAEFR AEPHTWCLLVRENGTMEIYQLPDWRLVFLVKNFPVQQRVLVDSSFGQPTTQGEARREEATROGELPLVKEVLLVALGSRQ SRPYLLVHVDQELLIYEAFPHDSQLGQGNLKVRFKKVPHNINFREKKPKPSKKAEGGGAEAGARGRVARFRYFEDIYG YSGVFICGPSP

靶点信息

研究背景	Cleavage and polyadenylation specificity factor (CPSF) is a multisubunit complex that plays a central role in 3-prime processing of pre-mRNAs. CPSF recognizes the AAUAAA signal in the pre-mRNA and interacts with other proteins to facilitate both RNA cleavage and poly(A) synthesis. CPSF1 is the largest subunit of the CPSF complex (Murthy and Manley, 1995 [PubMed 7590244]).
------	--

基因ID	29894
基因名	CPSF1
Swiss	Q10570
别名	CPSF1;CPSF160;HSU37012;P/cl.18

产品验证



Western blot analysis of CPSF1 expressed in 293T,NIH/3T3,Mouse liver using CPSF1 Rabbit pAb at 1:1000. Secondary antibody: HRP Goat Anti-Rabbit IgG (H+L) at 1:5000. Lysates/proteins: 30ug per lane. Blocking buffer: 5% non-fat dry milk in TBST. Detection: ECL Enhanced Kit. Exposure time: 120s.

实验步骤

访问官网浏览详情: www.ablybio.cn