

# CHORDC1 Rabbit pAb

货号: **AYP20676**

## 产品信息

反应	Mouse
宿主	Rabbit
克隆性	Polyclonal
预测反应	
应用	WB
推荐浓度	<b>WB:</b> 1:500 - 1:2000
理论分子量	
实测分子量	37kD
形式	Liquid
保存条件	Store at -20°C. Avoid freeze / thaw cycles. Buffer: PBS with 0.01% thiomersal, 50% glycerol, pH7.3.
偶联物	Unconjugated
阳性对照	
细胞定位	
纯化	Affinity purification

## 抗原信息

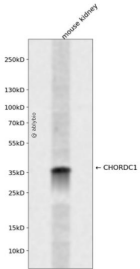
抗原信息	Recombinant fusion protein containing a sequence corresponding to amino acids 60-160 of human CHORDC1 (NP_036256.2).
序列	TKGRHNSEKPPPEVKPEVKTTEKKELCELKPKFQEHI IQAPKPVEAIKRSPDEPMTNLELKISASLKQALDKLKLSSGNEENK KEEDNDEIKIGTSCKNG

## 靶点信息

研究背景	Regulates centrosome duplication, probably by inhibiting the kinase activity of ROCK2. Proposed to act as co-chaperone for HSP90. May play a role in the regulation of NOD1 via a HSP90 chaperone complex. In vitro, has intrinsic chaperone activity. This function may be achieved by inhibiting association of ROCK2 with NPM1. Plays a role in ensuring the localization of the tyrosine kinase receptor EGFR to the plasma membrane, and thus ensures the subsequent regulation of EGFR activity and EGF-induced actin cytoskeleton remodeling. Involved in stress response. Prevents tumorigenesis.
基因ID	26973

基因名	CHORDC1
Swiss	Q9UHD1
别名	CHORDC1;CHP1

## 产品验证



Western blot analysis of CHORDC1 expressed in mouse kidney using CHORDC1 Rabbit pAb at 1:1000. Secondary antibody: HRP Goat Anti-Rabbit IgG (H+L) at 1:5000. Lysates/proteins: 30ug per lane. Blocking buffer: 5% non-fat dry milk in TBST. Detection: ECL Enhanced Kit. Exposure time: 120s.

## 实验步骤

访问官网浏览详情: [www.ablybio.cn](http://www.ablybio.cn)