

KAT6B Rabbit pAb

货号: **AYP20667**

产品信息

反应	Human,Mouse,Rat
宿主	Rabbit
克隆性	Polyclonal
预测反应	
应用	WB
推荐浓度	WB: 1:500 - 1:2000
理论分子量	
实测分子量	280kDa
形式	Liquid
保存条件	Store at -20°C. Avoid freeze / thaw cycles. Buffer: PBS with 0.01% thiomersal,50% glycerol,pH7.3.
偶联物	Unconjugated
阳性对照	293T,HeLa,OVCAR3,Mouse heart
细胞定位	nucleoplasm,nucleus
纯化	Affinity purification

抗原信息

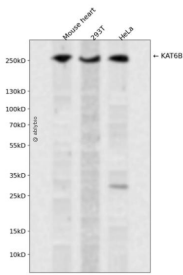
抗原信息	A synthetic peptide corresponding to a sequence within amino acids 400-500 of human KAT6B (NP_001243398.1).
序列	DLDVFKQAQELSWEKIECESGVEDCGRYPSVIEFGKYEIQTWYSSPYQEYARLPKLYLCEFLKYMKSKNILLRHSKKGWFHPPANEIYRRKDLSVFEV

靶点信息

研究背景	The protein encoded by this gene is a histone acetyltransferase and component of the MOZ/MORF protein complex. In addition to its acetyltransferase activity, the encoded protein has transcriptional activation activity in its N-terminal end and transcriptional repression activity in its C-terminal end. This protein is necessary for RUNX2-dependent transcriptional activation and could be involved in brain development. Mutations have been found in patients with genitopatellar syndrome. A translocation of this gene and the CREB BP gene results in acute myeloid leukemias. Three transcript variants encoding different isoforms have been found for this gene.
------	--

基因ID	23522
基因名	KAT6B
Swiss	Q8WYB5
别名	KAT6B;GTPTS;MORF;MOZ2;MYST4;ZC2HC6B;qkf;querkopf

产品验证



Western blot analysis of KAT6B expressed in Mouse heart,293T,HeLa using KAT6B Rabbit pAb at 1:1000 . Secondary antibody: HRP Goat Anti-Rabbit IgG (H+L) at 1:5000. Lysates/proteins: 30ug per lane. Blocking buffer: 5% non-fat dry milk in TBST. Detection: ECL Enhanced Kit. Exposure time: 120s.

实验步骤

访问官网浏览详情: www.ablybio.cn