

RGL1 Rabbit pAb

货号: **AYP20665**

产品信息

反应	Human,Mouse,Rat
宿主	Rabbit
克隆性	Polyclonal
预测反应	
应用	WB
推荐浓度	WB: 1:500 - 1:2000
理论分子量	
实测分子量	85,110kD
形式	Liquid
保存条件	Store at -20°C. Avoid freeze / thaw cycles. Buffer: PBS with 0.01% thiomersal,50% glycerol,pH7.3.
偶联物	Unconjugated
阳性对照	
细胞定位	cytosol,plasma membrane
纯化	Affinity purification

抗原信息

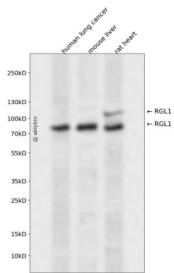
抗原信息	A synthetic peptide corresponding to a sequence within amino acids 300-400 of human RGL1 (NP_001284600.1).
序列	LKTQQRAKIIEKWINIAHECRLLKNFSSLRAIVSALQNSIYRLKKTWAAVPRDRMLMFEELSDIFSDHNNHLTSRELLMKEGTSKFANLDSSVKENQKRT

靶点信息

研究背景	Probable guanine nucleotide exchange factor.
基因ID	23179
基因名	RGL1

Swiss	Q9NZL6
别名	RGL1;RGL

产品验证



Western blot analysis of RGL1 expressed in human lung cancer, mouse liver, rat heart using RGL1 Rabbit pAb at 1:1000. Secondary antibody: HRP Goat Anti-Rabbit IgG (H+L) at 1:5000. Lysates/proteins: 30ug per lane. Blocking buffer: 5% non-fat dry milk in TBST. Detection: ECL Enhanced Kit. Exposure time: 120s.

实验步骤

访问官网浏览详情: www.ablybio.cn