

SRSF8 Rabbit pAb

货号: AYP20659

产品信息

反应	Mouse
宿主	Rabbit
克隆性	Polyclonal
预测反应	
应用	WB
推荐浓度	WB: 1:500 - 1:2000
理论分子量	
实测分子量	32kDa
形式	Liquid
保存条件	Store at -20°C. Avoid freeze / thaw cycles. Buffer: PBS with 0.01% thiomersal, 50% glycerol, pH7.3.
偶联物	Unconjugated
阳性对照	Mouse brain, Mouse heart, Mouse kidney
细胞定位	cytoplasm, cytosol, nuclear speck, nucleoplasm
纯化	Affinity purification

抗原信息

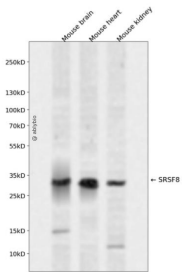
抗原信息	A synthetic peptide corresponding to a sequence within amino acids 1-100 of human SRSF8 (NP_115285.1).
序列	MSCGRPPPDVDGMITLKVDNLTYRTSPDSLRRVFEKYGRVGDVYIPREPHTKAPRGFAFVRFHRRDAQDAEAAMDGAE LDGRELRVQVARYGRRDLPRS

靶点信息

研究背景	This gene encodes a member of a family of proteins containing a ribonucleoprotein (RNP)-type RNA binding motif and a carboxyl-terminal arginine-serine-rich (RS) domain. The encoded protein functions as a pre-mRNA splicing factor. There is a pseudogene for this gene on chromosome 7. Alternative splicing results in multiple transcript variants.
基因ID	10929

基因名	SRSF8
Swiss	Q9BRL6
别名	SRSF8;DSM-1;SFRS2B;SRP46

产品验证



Western blot analysis of SRSF8 expressed in Mouse brain, Mouse heart, Mouse kidney using SRSF8 Rabbit pAb at 1:1000. Secondary antibody: HRP Goat Anti-Rabbit IgG (H+L) at 1:5000. Lysates/proteins: 30ug per lane. Blocking buffer: 5% non-fat dry milk in TBST. Detection: ECL Enhanced Kit. Exposure time: 120 S.

实验步骤

访问官网浏览详情: www.ablybio.cn