

SLCO1B1 Rabbit pAb

货号: AYP20658

产品信息

反应	Human,Mouse,Rat
宿主	Rabbit
克隆性	Polyclonal
预测反应	
应用	WB
推荐浓度	WB: 1:500 - 1:1000
理论分子量	76kDa
实测分子量	76kDa
形式	Liquid
保存条件	Store at -20°C. Avoid freeze / thaw cycles. Buffer: PBS with 0.01% thiomersal,50% glycerol,pH7.3.
偶联物	Unconjugated
阳性对照	HepG2,MCF7,Mouse liver,Rat liver
细胞定位	Basolateral cell membrane,Multi-pass membrane protein
纯化	Affinity purification

抗原信息

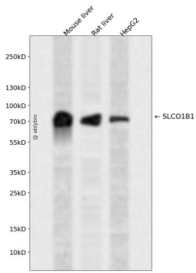
抗原信息	Recombinant fusion protein containing a sequence corresponding to amino acids 597-691 of human SLCO1B1 (NP_006437.3).
序列	TTCIKWSTNNCGTRGSCRTYNSTSFSRVYLGLSSMLRVSSLVLYIILYAMKKKYQEKDINASENGSVMDEANLES LNKNKH FVPSAGADSETHC

靶点信息

研究背景	This gene encodes a liver-specific member of the organic anion transporter family. The encoded protein is a transmembrane receptor that mediates the sodium-independent uptake of numerous endogenous compounds including bilirubin, 17-beta-glucuronosyl estradiol and leukotriene C4. This protein is also involved in the removal of drug compounds such as statins, bromosulphophthalein and rifampin from the blood in the hepatocytes. Polymorphisms in the gene encoding this protein are associated with impaired transporter function.
------	---

基因ID	10599
基因名	SLCO1B1
Swiss	Q9Y6L6
别名	SLCO1B1;HBLRR;LST-1;LST1;OATP-C;OATP1B1;OATP2;OATPC;SLC21A6

产品验证



Western blot analysis of SLCO1B1 expressed in Mouse liver,Rat liver,HepG2 using SLCO1B1 Rabbit pAb at 1:1000. Secondary antibody: HRP Goat Anti-Rabbit IgG (H+L) at 1:5000. Lysates/proteins: 30ug per lane. Blocking buffer: 5% non-fat dry milk in TBST. Detection: ECL Enhanced Kit. Exposure time: 120s.

实验步骤

访问官网浏览详情: www.ablybio.cn