

YKT6 Rabbit pAb

货号: **AYP20656**

产品信息

反应	Human
宿主	Rabbit
克隆性	Polyclonal
预测反应	
应用	WB
推荐浓度	WB: 1:500 - 1:2000
理论分子量	
实测分子量	22kD
形式	Liquid
保存条件	Store at -20°C. Avoid freeze / thaw cycles. Buffer: PBS with 0.01% thiomersal,50% glycerol,pH7.3.
偶联物	Unconjugated
阳性对照	human liver
细胞定位	apical dendrite,basal dendrite,cytoplasm,cytosol,endoplasmic reticulum,endosome,Golgi apparatus,mitochondrion,plasma membrane,SNARE complex
纯化	Affinity purification

抗原信息

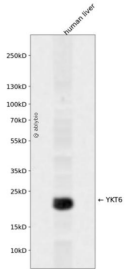
抗原信息	A synthetic peptide corresponding to a sequence within amino acids 100-198 of human YKT6 (NP_006546.1).
序列	EFSKQVDRIDWPGSPATIHYPALDGHLRSRYQNPREADPMTKVQAELDETKIILHNTMESLLERGEKLLDDLVSKEVLGTQSKAFYKTARKQNSCCAIM

靶点信息

研究背景	This gene product is one of the SNARE recognition molecules implicated in vesicular transport between secretory compartments. It is a membrane associated, isoprenylated protein that functions at the endoplasmic reticulum-Golgi transport step. This protein is highly conserved from yeast to human and can functionally complement the loss of the yeast homolog in the yeast secretory pathway.
基因ID	10652

基因名	YKT6
Swiss	O15498
别名	YKT6

产品验证



Western blot analysis of YKT6 expressed in human liver using YKT6 Rabbit pAb at 1:1000. Secondary antibody: HRP Goat Anti-Rabbit IgG (H+L) at 1:5000. Lysates/proteins: 30ug per lane. Blocking buffer: 5% non-fat dry milk in TBST. Detection: ECL Enhanced Kit. Exposure time: 120s.

实验步骤

访问官网浏览详情: www.ablybio.cn