

# YKT6 Rabbit pAb

货号: **AYP20654**

## 产品信息

反应	Rat
宿主	Rabbit
克隆性	Polyclonal
预测反应	
应用	WB
推荐浓度	<b>WB:</b> 1:500 - 1:2000
理论分子量	
实测分子量	22kDa
形式	Liquid
保存条件	Store at -20°C. Avoid freeze / thaw cycles. Buffer: PBS with 0.01% thiomersal,50% glycerol,pH7.3.
偶联物	Unconjugated
阳性对照	Rat brain
细胞定位	apical dendrite,basal dendrite,cytoplasm,cytosol,endoplasmic reticulum,endosome,Golgi apparatus,mitochondrion,plasma membrane,SNARE complex
纯化	Affinity purification

## 抗原信息

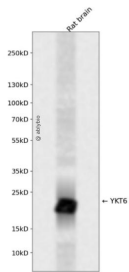
抗原信息	A synthetic peptide corresponding to a sequence within amino acids 100-198 of human YKT6 (NP_006546.1).
序列	EFSKQVDRIDWPGSPATIHYPALDGHLRSRYQNPREADPMTKVQAELDETKIILHNTMESLLERGEKLLDDLVSKEVLGTQSKAFYKTARKQNSCCAIM

## 靶点信息

研究背景	This gene product is one of the SNARE recognition molecules implicated in vesicular transport between secretory compartments. It is a membrane associated, isoprenylated protein that functions at the endoplasmic reticulum-Golgi transport step. This protein is highly conserved from yeast to human and can functionally complement the loss of the yeast homolog in the yeast secretory pathway.
基因ID	10652

基因名	YKT6
Swiss	O15498
别名	YKT6

## 产品验证



Western blot analysis of YKT6 expressed in Rat brain using YKT6 Rabbit pAb at 1:1000. Secondary antibody: HRP Goat Anti-Rabbit IgG (H+L) at 1:5000. Lysates/proteins: 30ug per lane. Blocking buffer: 5% non-fat dry milk in TBST. Detection: ECL Enhanced Kit. Exposure time: 120s.

## 实验步骤

访问官网浏览详情: [www.ablybio.cn](http://www.ablybio.cn)