

TMEM147 Rabbit pAb

货号: **AYP20651**

产品信息

反应	Human,Mouse
宿主	Rabbit
克隆性	Polyclonal
预测反应	
应用	WB
推荐浓度	WB: 1:500 - 1:2000
理论分子量	
实测分子量	25KDa
形式	Liquid
保存条件	Store at -20°C. Avoid freeze / thaw cycles. Buffer: PBS with 0.01% thiomersal,50% glycerol,pH7.3.
偶联物	Unconjugated
阳性对照	MCF7
细胞定位	plasma membrane
纯化	Affinity purification

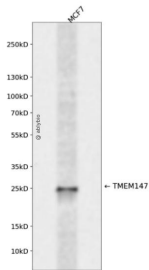
抗原信息

抗原信息	A synthetic peptide corresponding to a sequence within amino acids 50-150 of human TMEM147 (NP_116024.1).
序列	MLFLATFFPTWEGGIYDFIGEFMKASVDVADLIGLNLMVSRNAGKGEYKIMVAALGWATAELIMSRCIPLWVGARGIEFDW KYIQMSIDSNISLVHYIVAS

靶点信息

研究背景	Component of a ribosome-associated endoplasmic reticulum (ER translocon complex involved in multi-pass membrane protein transport into the ER membrane and biogenesis. Together with SEC61 and TMCO1, forms the lipid-filled cavity at the center of the translocon where TMEM147 may insert hydrophobic segments of multi-pass membrane proteins from the lumen into the central membrane cavity in a process gated by SEC61, and TMCO1 may insert hydrophobic segments of nascent chains from the cytosol into the cavity. Acts as a negative regulator of CHRM3 function, most likely by interfering with its trafficking to the cell membrane. Negatively regulates CHRM3-mediated calcium mobilization and activation of RPS6KA1/p90RSK activity.
基因ID	10430
基因名	TMEM147
Swiss	Q9BVK8
别名	TMEM147;NIFIE14

产品验证



Western blot analysis of TMEM147 expressed in MCF7 using TMEM147 Rabbit pAb at 1:1000. Secondary antibody: HRP Goat Anti-Rabbit IgG (H+L) at 1:5000. Lysates/proteins: 30ug per lane. Blocking buffer: 5% non-fat dry milk in TBST. Detection: ECL Enhanced Kit. Exposure time: 120s.

实验步骤

访问官网浏览详情: www.ablybio.cn