

TELO2 Rabbit pAb

货号: **AYP20645**

产品信息

反应	Human,Mouse
宿主	Rabbit
克隆性	Polyclonal
预测反应	
应用	WB
推荐浓度	WB: 1:500 - 1:2000
理论分子量	91kDa
实测分子量	102kDa
形式	Liquid
保存条件	Store at -20°C. Avoid freeze / thaw cycles. Buffer: PBS with 0.01% thiomersal,50% glycerol,pH7.3.
偶联物	Unconjugated
阳性对照	K-562,HeLa
细胞定位	cytoplasm,cytosol,nuclear body,nucleus
纯化	Affinity purification

抗原信息

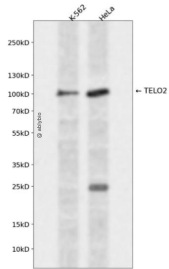
抗原信息	A synthetic peptide corresponding to a sequence within amino acids 450-550 of human TELO2 (NP_057195.2).
序列	ASEAGTSLVPATAEPPAETPAEIVDGGVPQAQLAGSDSDLSDDEFVPMMSGDRELKSSKAPAYVRDCVEALTTSEDIERWEAALRALEGLVYRSPTATR

靶点信息

研究背景	This gene encodes a protein that functions as an S-phase checkpoint protein in the cell cycle. The protein may also play a role in DNA repair.
基因ID	9894
基因名	TELO2

Swiss	Q9Y4R8
别名	TELO2;CLK2;TEL2;YHFS

产品验证



Western blot analysis of TELO2 expressed in K-562, HeLa using TELO2 Rabbit pAb at 1:1000. Secondary antibody: HRP Goat Anti-Rabbit IgG (H+L) at 1:5000. Lysates/proteins: 30ug per lane. Blocking buffer: 5% non-fat dry milk in TBST. Detection: ECL Enhanced Kit. Exposure time: 120s.

实验步骤

访问官网浏览详情: www.ablybio.cn