

MAML1 Rabbit pAb

货号: **AYP20644**

产品信息

反应	Human,Mouse,Rat
宿主	Rabbit
克隆性	Polyclonal
预测反应	
应用	WB
推荐浓度	WB: 1:500 - 1:2000
理论分子量	108kDa
实测分子量	120kDa
形式	Liquid
保存条件	Store at -20°C. Avoid freeze / thaw cycles. Buffer: PBS with 0.01% thiomersal,50% glycerol,pH7.3.
偶联物	Unconjugated
阳性对照	HeLa,Jurkat,mouse brain,rat brain
细胞定位	nuclear speck,nucleoplasm,nucleus
纯化	Affinity purification

抗原信息

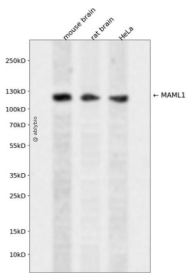
抗原信息	Recombinant fusion protein containing a sequence corresponding to amino acids 1-300 of human MAML1 (NP_055572.1).
序列	MVLPTCPMAEFALPRHSVMERLRRRIELCRRHHSTCEARYEAVSPERLELERQHTFALHQRCIQAKAKRAGKHRQPPAATA PAPAAPAPRLDAADGPEHGRPATHLHDTVKNLDSATSPQNGDQNGYGDLFPGHKKTRREAPLGVAISSNGLPPASPL GQSDKPSGADALQSSGKHSGLDSLNNKRLADSSLHLNGGSNPSESFPLSLNKELKQEPVEDLPCMITGTGVSISQSNLM PDLNLNEQEWKELIEELNRSVPDEDMKDLFNEDEEKKDPESGSGSATQTPLAQDINIKT

靶点信息

研究背景	This protein is the human homolog of mastermind, a Drosophila protein that plays a role in the Notch signaling pathway involved in cell-fate determination. There is in vitro evidence that the human homolog forms a complex with the intracellular portion of human Notch receptors and can increase expression of a Notch-induced gene. This evidence supports its proposed function as a transcriptional co-activator in the Notch signaling pathway.
------	---

基因ID	9794
基因名	MAML1
Swiss	Q92585
别名	MAML1;Mam-1;Mam1

产品验证



Western blot analysis of MAML1 expressed in mouse brain, rat brain, HeLa using MAML1 Rabbit pAb at 1:1000. Secondary antibody: HRP Goat Anti-Rabbit IgG (H+L) at 1:5000. Lysates/proteins: 30ug per lane. Blocking buffer: 5% non-fat dry milk in TBST. Detection: ECL Enhanced Kit. Exposure time: 120s.

实验步骤

访问官网浏览详情: www.ablybio.cn