

# BRSK2 Rabbit pAb

货号: **AYP20634**

## 产品信息

反应	Human,Mouse
宿主	Rabbit
克隆性	Polyclonal
预测反应	
应用	WB
推荐浓度	<b>WB:</b> 1:500 - 1:1000
理论分子量	68kDa/74kDa/75kDa/77kDa/81kDa/84kDa
实测分子量	78-90kDa
形式	Liquid
保存条件	Store at -20°C. Avoid freeze / thaw cycles. Buffer: PBS with 0.01% thiomersal,50% glycerol,pH7.3.
偶联物	Unconjugated
阳性对照	U-87MG,A-549,Mouse brain
细胞定位	centrosome,cytoplasm,endoplasmic reticulum,perinuclear region of cytoplasm
纯化	Affinity purification

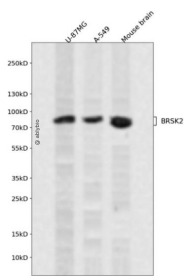
## 抗原信息

抗原信息	A synthetic peptide corresponding to a sequence within amino acids 200-300 of human BRSK2 (NP_001243556.1).
序列	WSCGVILFALLVGLPFDDNLRQLLEKVKRGVFMHPHFIPPDCQSLLRGMIEVDAARRLTLEHIQKHIWIYIGGKNEPEPEQ PIPRKVQIRSLPSLEDIDP

## 靶点信息

研究背景	Serine/threonine-protein kinase that plays a key role in polarization of neurons and axonogenesis, cell cycle progress and insulin secretion. Phosphorylates CDK16, CDC25C, MAPT/TAU, PAK1 and WEE1. Following phosphorylation and activation by STK11/LKB1, acts as a key regulator of polarization of cortical neurons, probably by mediating phosphorylation of microtubule-associated proteins such as MAPT/TAU at 'Thr-529' and 'Ser-579'. Also regulates neuron polarization by mediating phosphorylation of WEE1 at 'Ser-642' in postmitotic neurons, leading to down-regulate WEE1 activity in polarized neurons. Plays a role in the regulation of the mitotic cell cycle progress and the onset of mitosis. Plays a role in the regulation of insulin secretion in response to elevated glucose levels, probably via phosphorylation of CDK16 and PAK1. While BRSK2 phosphorylated at Thr-174 can inhibit insulin secretion, BRSK2 phosphorylated at Thr-260 can promote insulin secretion. Regulates reorganization of the actin cytoskeleton. May play a role in the apoptotic response triggered by endoplasmic reticulum (ER stress).
基因ID	9024
基因名	BRSK2
Swiss	Q8IWQ3
别名	BRSK2;C11orf7;PEN11B;SAD1;SADA;STK29

## 产品验证



Western blot analysis of BRSK2 expressed in U-87MG, A-549, Mouse brain using BRSK2 Rabbit pAb at 1:1000. Secondary antibody: HRP Goat Anti-Rabbit IgG (H+L) at 1:5000. Lysates/proteins: 30ug per lane. Blocking buffer: 5% non-fat dry milk in TBST. Detection: ECL Enhanced Kit. Exposure time: 120s.

## 实验步骤

访问官网浏览详情: [www.ablybio.cn](http://www.ablybio.cn)