

EIF2S2 Rabbit pAb

货号: **AYP20633**

产品信息

反应	Human,Mouse,Rat
宿主	Rabbit
克隆性	Polyclonal
预测反应	
应用	WB
推荐浓度	WB: 1:500 - 1:2000
理论分子量	38kDa
实测分子量	38kDa
形式	Liquid
保存条件	Store at -20°C. Avoid freeze / thaw cycles. Buffer: PBS with 0.01% thiomersal,50% glycerol,pH7.3.
偶联物	Unconjugated
阳性对照	HeLa,LO2,A-549,Rat liver,Rat brain
细胞定位	cytoplasm,cytosol,eukaryotic translation initiation factor 2 complex,synapse
纯化	Affinity purification

抗原信息

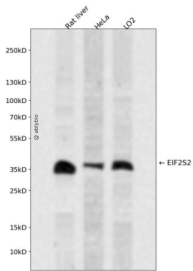
抗原信息	Recombinant fusion protein containing a sequence corresponding to amino acids 1-175 of human EIF2S2 (NP_003899.2).
序列	MSGDEMIFDPTMSKKKKKKKPFMLDEEGDTQTEETQPSETKEVEPEPTEDKDLADEEDTRKKDASDDLDDLNFNQK KKKKKTKKIFDIDEAEEGVKDLKIESDVQEPTPEDDLIMLGNKKKKKKNVKFPDEDEILEKDEALEDEDNKKDDGISFSN QTGPAWAGSERDYT

靶点信息

研究背景	Eukaryotic translation initiation factor 2 (EIF-2) functions in the early steps of protein synthesis by forming a ternary complex with GTP and initiator tRNA and binding to a 40S ribosomal subunit. EIF-2 is composed of three subunits, alpha, beta, and gamma, with the protein encoded by this gene representing the beta subunit. The beta subunit catalyzes the exchange of GDP for GTP, which recycles the EIF-2 complex for another round of initiation. Multiple transcript variants encoding different isoforms have been found for this gene.
------	---

基因ID	8894
基因名	EIF2S2
Swiss	P20042
别名	EIF2S2;EIF2;EIF2B;EIF2beta;PPP1R67;eIF-2-beta

产品验证



Western blot analysis of EIF2S2 expressed in Rat liver, HeLa, LO2 using EIF2S2 Rabbit pAb at 1:1000. Secondary antibody: HRP Goat Anti-Rabbit IgG (H+L) at 1:5000. Lysates/proteins: 30ug per lane. Blocking buffer: 5% non-fat dry milk in TBST. Detection: ECL Enhanced Kit. Exposure time: 120s.

实验步骤

访问官网浏览详情: www.ablybio.cn