

SLC25A16 Rabbit pAb

货号: **AYP20622**

产品信息

反应	Human,Mouse,Rat
宿主	Rabbit
克隆性	Polyclonal
预测反应	
应用	WB
推荐浓度	WB: 1:500 - 1:2000
理论分子量	
实测分子量	36kDa
形式	Liquid
保存条件	Store at -20°C. Avoid freeze / thaw cycles. Buffer: PBS with 0.01% thiomersal,50% glycerol,pH7.3.
偶联物	Unconjugated
阳性对照	Mouse kidney,Rat brain,Rat kidney
细胞定位	mitochondrial inner membrane,mitochondrion
纯化	Affinity purification

抗原信息

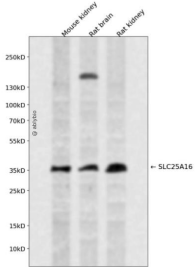
抗原信息	A synthetic peptide corresponding to a sequence within amino acids 200-300 of human SLC25A16 (NP_689920.1).
序列	APYAGVSFFFTGTLKSVGLSHAPDLLGRPSSDNPVNLVVKTHVNLLCGGVAGAIQTISYPFDVTRRRMQLGTVLPEFEKCL TMRDTMKYVYGHHGIRKGL

靶点信息

研究背景	This gene encodes a protein that contains three tandemly repeated mitochondrial carrier protein domains . The encoded protein is localized in the inner membrane and facilitates the rapid transport and exchange of molecules between the cytosol and the mitochondrial matrix space. This gene has a possible role in Graves' disease.
基因ID	8034

基因名	SLC25A16
Swiss	P16260
别名	SLC25A16;D10S105E;GDA;GDC;HGT.1;ML7;hML7

产品验证



Western blot analysis of SLC25A16 expressed in Mouse kidney,Rat brain,Rat kidney using SLC25A16 R abbit pAb at 1:1000. Secondary antibody: HRP Goat Anti-Rabbit IgG (H+L) at 1:5000. Lysates/proteins: 30ug per lane. Blocking buffer: 5% non-fat dry milk in TBST. Detection: ECL Enhanced Kit. Exposure time: 120s.

实验步骤

访问官网浏览详情: www.ablybio.cn