

WIPF1 Rabbit pAb

货号: **AYP20615**

产品信息

反应	Human,Mouse,Rat
宿主	Rabbit
克隆性	Polyclonal
预测反应	
应用	WB IHC
推荐浓度	WB: 1:500 - 1:2000 IHC: 1:100 - 1:200
理论分子量	
实测分子量	51kDa
形式	Liquid
保存条件	Store at -20°C. Avoid freeze / thaw cycles. Buffer: PBS with 0.01% thiomersal,50% glycerol,pH7.3.
偶联物	Unconjugated
阳性对照	RAW264.7,Mouse spleen
细胞定位	actin cytoskeleton,cytoplasmic vesicle,cytosol
纯化	Affinity purification

抗原信息

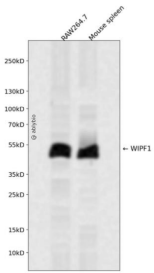
抗原信息	A synthetic peptide corresponding to a sequence within amino acids 400-500 of human WIPF1 (NP_001070737.1).
序列	QLPSRSGVDSRSGRPPPLPPDRPSAGAPPPPPSTIRNGFQDSPCEDEWESRFYFHPISDLPPPEPYVQTTKSYPSKLAR NESRSGSNRREREGAPPLPP

靶点信息

研究背景	This gene encodes a protein that plays an important role in the organization of the actin cytoskeleton. The encoded protein binds to a region of Wiskott-Aldrich syndrome protein that is frequently mutated in Wiskott-Aldrich syndrome, an X-linked recessive disorder. Impairment of the interaction between these two proteins may contribute to the disease. Two transcript variants encoding the same protein have been identified for this gene.
------	---

基因ID	7456
基因名	WIPF1
Swiss	O43516
别名	WIPF1;PRPL-2;WAS2;WASPIP;WIP

产品验证



Western blot analysis of WIPF1 expressed in RAW264.7, Mouse spleen using WIPF1 Rabbit pAb at 1:1000. Secondary antibody: HRP Goat Anti-Rabbit IgG (H+L) at 1:5000. Lysates/proteins: 30ug per lane. Blocking buffer: 5% non-fat dry milk in TBST. Detection: ECL Enhanced Kit. Exposure time: 120s.

实验步骤

访问官网浏览详情: www.ablybio.cn