

TOP3A Rabbit pAb

货号: **AYP20609**

产品信息

反应	Mouse
宿主	Rabbit
克隆性	Polyclonal
预测反应	
应用	WB
推荐浓度	WB: 1:500 - 1:2000
理论分子量	101kDa/109kDa/112kDa
实测分子量	112kDa
形式	Liquid
保存条件	Store at -20°C. Avoid freeze / thaw cycles. Buffer: PBS with 0.01% thiomersal, 50% glycerol, pH7.3.
偶联物	Unconjugated
阳性对照	Mouse testis
细胞定位	mitochondrial matrix, nucleoplasm, nucleus, PML body
纯化	Affinity purification

抗原信息

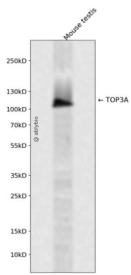
抗原信息	A synthetic peptide corresponding to a sequence within amino acids 1-100 of human TOP3A (XP_011522303.1).
序列	MILARNYLDVYPYDHWSDKILPVYEQGSHFQPSTVEMVDGETSPPKLLTEADLIALMEKHGIGTDATHAEHIETIKARMYVGLTPDKRFLPGHLMGLVE

靶点信息

研究背景	This gene encodes a DNA topoisomerase, an enzyme that controls and alters the topologic states of DNA during transcription. This enzyme catalyzes the transient breaking and rejoining of a single strand of DNA which allows the strands to pass through one another, thus reducing the number of supercoils and altering the topology of DNA. This enzyme forms a complex with BLM which functions in the regulation of recombination in somatic cells. Alternative splicing results in multiple transcript variants encoding different isoforms.
------	---

基因ID	7156
基因名	TOP3A
Swiss	Q13472
别名	TOP3A;TOP3;ZGRF7

产品验证



Western blot analysis of TOP3A expressed in Mouse testis using TOP3A Rabbit pAb at 1:1000. Secondary antibody: HRP Goat Anti-Rabbit IgG (H+L) at 1:5000. Lysates/proteins: 30ug per lane. Blocking buffer: 5% non-fat dry milk in TBST. Detection: ECL Enhanced Kit. Exposure time: 120s.

实验步骤

访问官网浏览详情: www.ablybio.cn