

MAPK13 Rabbit pAb

货号: **AYP20598**

产品信息

反应	Human,Mouse,Rat
宿主	Rabbit
克隆性	Polyclonal
预测反应	
应用	WB
推荐浓度	WB: 1:500 - 1:2000
理论分子量	28kDa/42kDa
实测分子量	42kDa
形式	Liquid
保存条件	Store at -20°C. Avoid freeze / thaw cycles. Buffer: PBS with 0.02% sodium azide,50% glycerol,pH7.3.
偶联物	Unconjugated
阳性对照	22Rv1,5637,Mouse kidney,Mouse lung,Mouse pancreas,Rat kidney
细胞定位	cytoplasm,cytosol,nucleus
纯化	Affinity purification

抗原信息

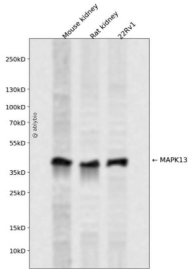
抗原信息	A synthetic peptide corresponding to a sequence within amino acids 300-400 of human MAPK13 (O15264).
序列	AQALTHPPFFEPFRDPEEETEAQPPFDDSLHEKLTVDEWKQHIIYKEIVNFSPIARKDSRRRSGMKL

靶点信息

研究背景	This gene encodes a member of the mitogen-activated protein (MAP) kinase family. MAP kinases act as a n integration point for multiple biochemical signals, and are involved in a wide variety of cellular processes such as proliferation, differentiation, transcription regulation and development. The encoded protein is a p38 MAP kinase and is activated by proinflammatory cytokines and cellular stress. Substrates of the encoded protein include the transcription factor ATF2 and the microtubule dynamics regulator stathmin. Alternatively spliced transcript variants have been observed for this gene.
基因ID	5603

基因名	MAPK13
Swiss	O15264
别名	MAPK13;MAPK 13;MAPK-13;PRKM13;SAPK4;p38delta

产品验证



Western blot analysis of MAPK13 expressed in Mouse kidney,Rat kidney,22Rv1 using MAPK13 Rabbit p Ab at 1:1000. Secondary antibody: HRP Goat Anti-Rabbit IgG (H+L) at 1:5000. Lysates/proteins: 30ug per lane. Blocking buffer: 5% non-fat dry milk in TBST. Detection: ECL Enhanced Kit. Exposure time: 120 S.

实验步骤

访问官网浏览详情: www.ablybio.cn