

— ABLYBIO, Help Your Research



# PEDF/SERPINF1 Rabbit pAb

货号: **AYP20589**

## 产品信息

反应	Human,Mouse,Rat
宿主	Rabbit
克隆性	Polyclonal
预测反应	
应用	WB IF/ICC
推荐浓度	<b>WB:</b> 1:500 - 1:2000 <b>IF/ICC:</b> 1:50 - 1:200
理论分子量	46kDa
实测分子量	46kDa
形式	Liquid
保存条件	Store at -20°C. Avoid freeze / thaw cycles. Buffer: PBS with 0.01% thiomersal,50% glycerol,pH7.3.
偶联物	Unconjugated
阳性对照	Human serum,HepG2,A375,U2OS
细胞定位	Melanosome,Secreted
纯化	Affinity purification

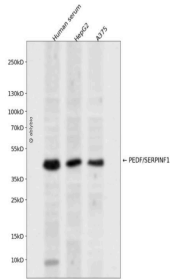
## 抗原信息

抗原信息	A synthetic peptide corresponding to a sequence within amino acids 150-250 of human PEDF/SERPINF1 (NP_002606.3).
------	--

## 靶点信息

研究背景	This gene encodes a member of the serpin family that does not display the serine protease inhibitory activity shown by many of the other serpin proteins. The encoded protein is secreted and strongly inhibits angiogenesis. In addition, this protein is a neurotrophic factor involved in neuronal differentiation in retinoblastoma cells. Mutations in this gene were found in individuals with osteogenesis imperfecta, type VI.
基因ID	5176
基因名	SERPINF1
Swiss	P36955 ( <a href="https://www.uniprot.org/uniprotkb/P36955/entry">https://www.uniprot.org/uniprotkb/P36955/entry</a> )
别名	SERPINF1,EPC-1,OI12,OI6,PEDF,PIG35,PEDF/SERPINF1 Rabbit pAb,Cell proliferation-inducing gene 35 protein,Serpin F1

## 产品验证



Western blot analysis of PEDF/SERPINF1 expressed in Human serum, HepG2, A375 using PEDF/SERPINF1 R abbit pAb at 1:1000. Secondary antibody: HRP Goat Anti-Rabbit IgG (H+L) at 1:5000. Lysates/proteins: 30 ug per lane. Blocking buffer: 5% non-fat dry milk in TBST. Detection: ECL Enhanced Kit. Exposure time: 12 0s.

## 实验步骤

访问官网浏览详情: [www.ablybio.cn](http://www.ablybio.cn) (<https://www.ablybio.cn/www.ablybio.cn>)