

PLAG1 Rabbit pAb

货号: **AYP20587**

产品信息

反应	Rat
宿主	Rabbit
克隆性	Polyclonal
预测反应	
应用	WB
推荐浓度	WB: 1:500 - 1:1000
理论分子量	46kDa/55kDa
实测分子量	55KDa
形式	Liquid
保存条件	Store at -20°C. Avoid freeze / thaw cycles. Buffer: PBS with 0.01% thiomersal, 50% glycerol, pH7.3.
偶联物	Unconjugated
阳性对照	Rat heart
细胞定位	Nucleus
纯化	Affinity purification

抗原信息

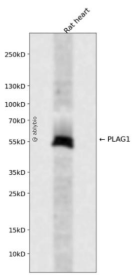
抗原信息	Recombinant fusion protein containing a sequence corresponding to amino acids 33-288 of human PLAG1 (NP_002646.2).
序列	NFPCQLCDKAFNSVEKLVHSYSHTGERPYKCIQQDCTKAFVSKYKLRHMATHSPEKTHKCNCEKMFHRKDHLKNHLHTHDPNKETFKCEECGKNYNTKLGFKRHLALHAATSGDLTCKVCLQTFESTGVLLLEHLKSHAGKSSGGVKEKKHQCEHC DRRFYTRKDVRRHVMVHTGRKDFLCQYCAQRFGRKDLTRHMKKSHNQELLKVKTEPVDFLDPFTCNVSVPIKDELLPVMSLPSELLSKPFTNTLQL

靶点信息

研究背景	Pleomorphic adenoma gene 1 encodes a zinc finger protein with 2 putative nuclear localization signals. PLAG1, which is developmentally regulated, has been shown to be consistently rearranged in pleomorphic adenomas of the salivary glands. PLAG1 is activated by the reciprocal chromosomal translocations involving 8q12 in a subset of salivary gland pleomorphic adenomas. Three transcript variants encoding two different isoforms have been found for this gene.
------	--

基因ID	5324
基因名	PLAG1
Swiss	Q6DJT9
别名	PLAG1;PSA;SGPA;ZNF912

产品验证



Western blot analysis of PLAG1 expressed in Rat heart using PLAG1 Rabbit pAb at 1:1000. Secondary anti body: HRP Goat Anti-Rabbit IgG (H+L) at 1:5000. Lysates/proteins: 30ug per lane. Blocking buffer: 5% no n-fat dry milk in TBST. Detection: ECL Enhanced Kit. Exposure time: 120s.

实验步骤

访问官网浏览详情: www.ablybio.cn