

# Mu Opioid Receptor(MOR) Rabbit pAb

货号: AYP20582

## 产品信息

反应	Human,Mouse,Rat
宿主	Rabbit
克隆性	Polyclonal
预测反应	
应用	WB IHC IF/ICC
推荐浓度	<b>WB:</b> 1:500 - 1:2000 <b>IHC:</b> 1:50 - 1:200 <b>IF/ICC:</b> 1:50 - 1:200
理论分子量	10-20kDa/33-55kDa
实测分子量	10-20kDa/33-55kDa
形式	Liquid
保存条件	Store at -20°C. Avoid freeze / thaw cycles. Buffer: PBS with 0.01% thiomersal,50% glycerol,pH7.3.
偶联物	Unconjugated
阳性对照	mouse brain tissue, rat brain tissue
细胞定位	Cell membrane,Cytoplasm,Multi-pass membrane protein
纯化	Affinity purification

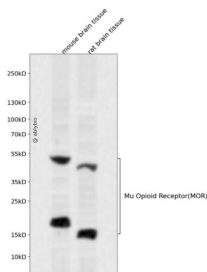
## 抗原信息

抗原信息	Recombinant fusion protein containing a sequence corresponding to amino acids 354-388 of human Mu Opioid Receptor(MOR) (NP_000905.3).
序列	IPTSSNIEQQNSTRIRQNTRDHPSTANTVDRTNHQ

## 靶点信息

研究背景	This gene encodes one of at least three opioid receptors in humans; the mu opioid receptor (MOR). The MOR is the principal target of endogenous opioid peptides and opioid analgesic agents such as beta-endorphin and enkephalins. The MOR also has an important role in dependence to other drugs of abuse, such as nicotine, cocaine, and alcohol via its modulation of the dopamine system. The NM_001008503.2:c.118A>G allele has been associated with opioid and alcohol addiction and variations in pain sensitivity but evidence for it having a causal role is conflicting. Multiple transcript variants encoding different isoforms have been found for this gene. Though the canonical MOR belongs to the superfamily of 7-transmembrane-spanning G-protein-coupled receptors some isoforms of this gene have only 6 transmembrane domains.
基因ID	4988
基因名	OPRM1
Swiss	P35372
别名	OPRM1;LMOR;M-OR-1;MOP;MOR;MOR1;OPRM

## 产品验证



Western blot analysis of Mu Opioid Receptor(MOR) expressed in mouse brain tissue, rat brain tissue using Mu Opioid Receptor(MOR) Rabbit pAb at 1:1000. Secondary antibody: HRP Goat Anti-Rabbit IgG (H+L) at 1:5000. Lysates/proteins: 30ug per lane. Blocking buffer: 5% non-fat dry milk in TBST. Detection: ECL Enhanced Kit. Exposure time: 120s.

## 实验步骤

访问官网浏览详情: [www.ablybio.cn](http://www.ablybio.cn)