

NPY2R Rabbit pAb

货号: **AYP20580**

产品信息

反应	Human
宿主	Rabbit
克隆性	Polyclonal
预测反应	
应用	WB
推荐浓度	WB: 1:500 - 1:2000
理论分子量	
实测分子量	43kD
形式	Liquid
保存条件	Store at -20°C. Avoid freeze / thaw cycles. Buffer: PBS with 0.01% thiomersal,50% glycerol,pH7.3.
偶联物	Unconjugated
阳性对照	
细胞定位	cilium,non-motile cilium,plasma membrane
纯化	Affinity purification

抗原信息

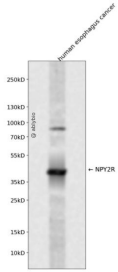
抗原信息	A synthetic peptide corresponding to a sequence within amino acids 300 to the C-terminus of human NPY 2R (NP_000901.1).
序列	LKEYKLIFTVFHIIAMCSTFANPLLYGWMNSNYRKAFLSAFRCEQRLDAIHSEVSVTFKAKKNLEVRKNSGPNDSFTEATNV

靶点信息

研究背景	Receptor for neuropeptide Y and peptide YY. The rank order of affinity of this receptor for pancreatic poly peptides is PYY > NPY > PYY (3-36 > NPY (2-36 > [Ile-31, Gln-34] PP > [Leu-31, Pro-34] NPY > PP, [Pro-34] PYY and NPY free acid.
基因ID	4887
基因名	NPY2R

Swiss	P49146
别名	NPY2R;NPY2-R

产品验证



Western blot analysis of NPY2R expressed in human esophagus cancer using NPY2R Rabbit pAb at 1:1000. Secondary antibody: HRP Goat Anti-Rabbit IgG (H+L) at 1:5000. Lysates/proteins: 30ug per lane. Blocking buffer: 5% non-fat dry milk in TBST. Detection: ECL Enhanced Kit. Exposure time: 120s.

实验步骤

访问官网浏览详情: www.ablybio.cn