

P2RY11 Rabbit pAb

货号: **AYP20579**

产品信息

反应	Human,Mouse,Rat
宿主	Rabbit
克隆性	Polyclonal
预测反应	
应用	WB
推荐浓度	WB: 1:500 - 1:2000
理论分子量	40kDa
实测分子量	45kDa
形式	Liquid
保存条件	Store at -20°C. Avoid freeze / thaw cycles. Buffer: PBS with 0.01% thiomersal,50% glycerol,pH7.3.
偶联物	Unconjugated
阳性对照	HeLa,Mouse liver,Rat liver
细胞定位	Cell membrane,Multi-pass membrane protein
纯化	Affinity purification

抗原信息

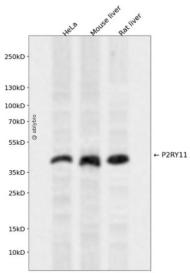
抗原信息	A synthetic peptide corresponding to a sequence within amino acids 300-379 of human P2RY11 (NP_002557.2).
序列	YVG YQVMRGLMPLAFCVHPLLYMAAVPSLGCCCRHCPGYRDSWNPEDAKSTGQALPLNATAAPKPSEPQSRELSQ

靶点信息

研究背景	The product of this gene belongs to the family of G-protein coupled receptors. This family has several receptor subtypes with different pharmacological selectivity, which overlaps in some cases, for various adenine and uridine nucleotides. This receptor is coupled to the stimulation of the phosphoinositide and adenylyl cyclase pathways and behaves as a selective purinoceptor. Naturally occurring read-through transcripts, resulting from intergenic splicing between this gene and an immediately upstream gene (PPAN, encoding pater pan homolog), have been found. The PPAN-P2RY11 read-through mRNA is ubiquitously expressed and encodes a fusion protein that shares identity with each individual gene product.
------	--

基因ID	5032
基因名	P2RY11
Swiss	Q96G91
别名	P2RY11;P2Y11

产品验证



Western blot analysis of P2RY11 expressed in HeLa, Mouse liver, Rat liver using P2RY11 Rabbit pAb at 1:1000. Secondary antibody: HRP Goat Anti-Rabbit IgG (H+L) at 1:5000. Lysates/proteins: 30ug per lane. Blocking buffer: 5% non-fat dry milk in TBST. Detection: ECL Enhanced Kit. Exposure time: 120s.

实验步骤

访问官网浏览详情: www.ablybio.cn