

# MAD2/MAD2L1 Rabbit pAb

货号: **AYP20564**

## 产品信息

反应	Human,Mouse,Rat
宿主	Rabbit
克隆性	Polyclonal
预测反应	
应用	WB
推荐浓度	<b>WB:</b> 1:500 - 1:2000
理论分子量	10kDa/23kDa
实测分子量	27kDa
形式	Liquid
保存条件	Store at -20°C. Avoid freeze / thaw cycles. Buffer: PBS with 0.01% thiomersal,50% glycerol,pH7.3.
偶联物	Unconjugated
阳性对照	Mouse liver,Rat liver
细胞定位	Chromosome,Cytoplasm,Nucleus,centromere,cytoskeleton,kinetochore,spindle pole
纯化	Affinity purification

## 抗原信息

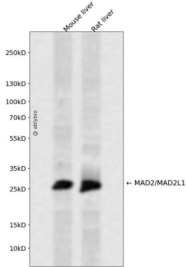
抗原信息	Recombinant fusion protein containing a sequence corresponding to amino acids 1-205 of human MAD2/MAD2/MAD2L1 (NP_002349.1).
序列	MALQLSREQGITLRGSAEIVAEFFSFGINSILYQRGIYPSETFTRVQKYLTLVTTDLELIKYLNNVVEQLKDWLYKCSVQKL VVVISNIESGEVLERWQFDIECDKTAKDDSDAPREKSQKAIQDEIRSVIRQITATVTFLPLLEVSCSFDLLIYTDKDLVPEKWE ESGPQFITNSEEVRLRSFTTTIHKVNSMVAYKIPVND

## 靶点信息

研究背景	MAD2L1 is a component of the mitotic spindle assembly checkpoint that prevents the onset of anaphase until all chromosomes are properly aligned at the metaphase plate. MAD2L1 is related to the MAD2L2 gene located on chromosome 1. A MAD2 pseudogene has been mapped to chromosome 14.
基因ID	4085

基因名	MAD2L1
Swiss	Q13257
别名	MAD2L1;HSMAD2;MAD2

## 产品验证



Western blot analysis of MAD2/MAD2L1 expressed in Mouse liver,Rat liver using MAD2/MAD2L1 Rabbit pAb at 1:1000. Secondary antibody: HRP Goat Anti-Rabbit IgG (H+L) at 1:5000. Lysates/proteins: 30ug per lane. Blocking buffer: 5% non-fat dry milk in TBST. Detection: ECL Enhanced Kit. Exposure time: 12 0s.

## 实验步骤

访问官网浏览详情: [www.ablybio.cn](http://www.ablybio.cn)