

IMPDH1 Rabbit pAb

货号: **AYP20562**

产品信息

反应	Human,Mouse,Rat
宿主	Rabbit
克隆性	Polyclonal
预测反应	
应用	WB
推荐浓度	WB: 1:500 - 1:2000
理论分子量	52kDa/54kDa/55kDa/60kDa/63kDa/64kDa
实测分子量	55kDa
形式	Liquid
保存条件	Store at -20°C. Avoid freeze / thaw cycles. Buffer: PBS with 0.02% sodium azide,50% glycerol,pH7.3.
偶联物	Unconjugated
阳性对照	BT-474,HT-29,Mouse pancreas
细胞定位	Cytoplasm,Nucleus
纯化	Affinity purification

抗原信息

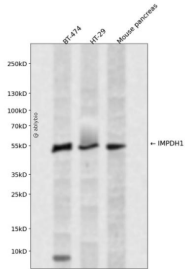
抗原信息	Recombinant fusion protein containing a sequence corresponding to amino acids 434-563 of human IMPDH1 (NP_899066.1).
序列	MMGSLLAATTEAPGEYFFSDGVRLKKYRGMGSLDAMEKSSSSQKRYFSEGDKVKIAQGVSGSIQDKGSIQKFVPLYAGIQHGCQDIGARSLSVLRSMYSGELKFEKRTMSAQIEGGVHGLHSYEKRLY

靶点信息

研究背景	The protein encoded by this gene acts as a homotetramer to regulate cell growth. The encoded protein is an enzyme that catalyzes the synthesis of xanthine monophosphate (XMP) from inosine-5'-monophosphate (IMP). This is the rate-limiting step in the de novo synthesis of guanine nucleotides. Defects in this gene are a cause of retinitis pigmentosa type 10 (RP10). Several transcript variants encoding different isoforms have been found for this gene.
基因ID	3614

基因名	IMPDH1
Swiss	P20839
别名	IMPDH1;IMPD;IMPD1;IMPDH-I;LCA11;RP10;sWSS2608

产品验证



Western blot analysis of IMPDH1 expressed in BT-474, HT-29, Mouse pancreas using IMPDH1 Rabbit pAb at 1:1000. Secondary antibody: HRP Goat Anti-Rabbit IgG (H+L) at 1:5000. Lysates/proteins: 30ug per lane. Blocking buffer: 5% non-fat dry milk in TBST. Detection: ECL Enhanced Kit. Exposure time: 120s.

实验步骤

访问官网浏览详情: www.ablybio.cn