

FOX11 Rabbit pAb

货号: AYP20540

产品信息

反应	Mouse
宿主	Rabbit
克隆性	Polyclonal
预测反应	
应用	WB
推荐浓度	WB: 1:100 - 1:500
理论分子量	
实测分子量	37KDa
形式	Liquid
保存条件	Store at -20°C. Avoid freeze / thaw cycles. Buffer: PBS with 0.01% thiomersal,50% glycerol,pH7.3.
偶联物	Unconjugated
阳性对照	Mouse kidney,Rat kidney
细胞定位	nucleolus,nucleus
纯化	Affinity purification

抗原信息

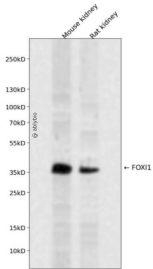
抗原信息	A synthetic peptide corresponding to a sequence within amino acids 1-100 of human FOX11 (NP_036320.2).
序列	MSSFDLPAPSPPRCSPQFPSIGQEPPEMNLYYENFFHPQGVPSPQRPSFEGGGEYGATPNPYLWFNGPTMTPPPYLPGPN ASPFLPQAYGVQRLLPSVS

靶点信息

研究背景	This gene belongs to the forkhead family of transcription factors, which is characterized by a distinct fork head domain. This gene may play an important role in the development of the cochlea and vestibulum, as well as in embryogenesis. The encoded protein has been found to be required for the transcription of four subunits of a proton pump found in the inner ear, the kidney, and the epididymis. Mutations in this gene have been associated with deafness, autosomal recessive 4.
基因ID	2299

基因名	FOXI1
Swiss	Q12951
别名	FOXI1;FKH10;FKHL10;FREAC-6;FREAC6;HFH-3;HFH3

产品验证



Western blot analysis of FOXI1 expressed in Mouse kidney,Rat kidney using FOXI1 Rabbit pAb at 1:1000. Secondary antibody: HRP Goat Anti-Rabbit IgG (H+L) at 1:5000. Lysates/proteins: 30ug per lane. Blocking buffer: 5% non-fat dry milk in TBST. Detection: ECL Enhanced Kit. Exposure time: 120s.

实验步骤

访问官网浏览详情: www.ablybio.cn