

CLN8 Rabbit pAb

货号: **AYP20539**

产品信息

反应	Human
宿主	Rabbit
克隆性	Polyclonal
预测反应	
应用	WB IHC
推荐浓度	WB: 1:500 - 1:2000 IHC: 1:100 - 1:500
理论分子量	
实测分子量	33kDa
形式	Liquid
保存条件	Store at -20°C. Avoid freeze / thaw cycles. Buffer: PBS with 0.01% thiomersal, 50% glycerol, pH7.3.
偶联物	Unconjugated
阳性对照	SKOV3, LO2, HeLa, K-562
细胞定位	endoplasmic reticulum, mitochondrion, presynapse
纯化	Affinity purification

抗原信息

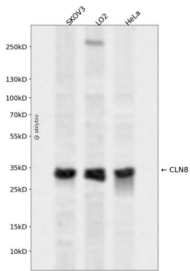
抗原信息	A synthetic peptide corresponding to a sequence within amino acids 200-286 of human CLN8 (NP_061764.2).
序列	MFHCRMVLTYHMWWVCFWHWDGLVSSLYLPHLTLFLVGLALLTLIINPYWTHKKTQQLLNPDWNFAQPEAKSRPEGN GQLLRKKRP

靶点信息

研究背景	This gene encodes a transmembrane protein belonging to a family of proteins containing TLC domains, which are postulated to function in lipid synthesis, transport, or sensing. The protein localizes to the endoplasmic reticulum (ER), and may recycle between the ER and ER-Golgi intermediate compartment. Mutations in this gene are associated with progressive epilepsy with mental retardation (EMPR), which is a subtype of neuronal ceroid lipofuscinoses (NCL). Patients with mutations in this gene have altered levels of sphingolipid and phospholipids in the brain.
------	---

基因ID	2055
基因名	CLN8
Swiss	Q9UBY8
别名	CLN8;C8orf61;EPMR

产品验证



Western blot analysis of CLN8 expressed in SKOV3,LO2,HeLa using CLN8 Rabbit pAb at 1:1000. Second ary antibody: HRP Goat Anti-Rabbit IgG (H+L) at 1:5000. Lysates/proteins: 30ug per lane. Blocking buff er: 5% non-fat dry milk in TBST. Detection: ECL Enhanced Kit. Exposure time: 120s.

实验步骤

访问官网浏览详情: www.ablybio.cn