

# SATB2 Rabbit pAb

货号: **AYP20496**

## 产品信息

反应	Human,Rat
宿主	Rabbit
克隆性	Polyclonal
预测反应	
应用	WB IHC
推荐浓度	<b>WB:</b> 1:500 - 1:1000 <b>IHC:</b> 1:50 - 1:200
理论分子量	69kDa/82kDa
实测分子量	83KDa
形式	Liquid
保存条件	Store at -20°C. Avoid freeze / thaw cycles. Buffer: PBS with 0.01% thiomersal,50% glycerol,pH7.3.
偶联物	Unconjugated
阳性对照	LO2
细胞定位	histone deacetylase complex,nuclear matrix,nucleoplasm
纯化	Affinity purification

## 抗原信息

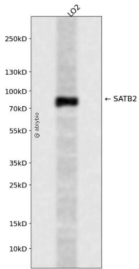
抗原信息	A synthetic peptide corresponding to a sequence within amino acids 634-733 of human SATB2 (NP_001165980.1).
序列	HDVGLYPDQEAIIHTLSAQLDLPKHTIIKFFQNQRYHVKHHGKLKEHLGSAVDVAEYKDEELLESEENDSEEGSEEMYKVEAEEENADKSKAAPAEIDQR

## 靶点信息

研究背景	This gene encodes a DNA binding protein that specifically binds nuclear matrix attachment regions. The encoded protein is involved in transcription regulation and chromatin remodeling. Defects in this gene are associated with isolated cleft palate and cognitive disability. Alternate splicing results in multiple transcript variants that encode the same protein.
基因ID	23314

基因名	SATB2
Swiss	Q9UPW6
别名	SATB2;GLSS

## 产品验证



Western blot analysis of SATB2 expressed in LO2 using SATB2 Rabbit pAb at 1:1000. Secondary antibody: HRP Goat Anti-Rabbit IgG (H+L) at 1:5000. Lysates/proteins: 30ug per lane. Blocking buffer: 5% non-fat dry milk in TBST. Detection: ECL Enhanced Kit. Exposure time: 120s.

## 实验步骤

访问官网浏览详情: [www.ablybio.cn](http://www.ablybio.cn)