

Alpha-Fetoprotein (AFP) Rabbit pAb

货号: **AYP20491**

产品信息

反应	Human,Mouse,Rat
宿主	Rabbit
克隆性	Polyclonal
预测反应	
应用	WB IF/ICC IP
推荐浓度	WB: 1:500 - 1:2000 IF/ICC: 1:50 - 1:200 IP: 1:50 - 1:100
理论分子量	68kDa
实测分子量	75kDa
形式	Liquid
保存条件	Store at -20°C. Avoid freeze / thaw cycles. Buffer: PBS with 0.01% thiomersal,50% glycerol,pH7.3.
偶联物	Unconjugated
阳性对照	HepG2,Mouse liver,Mouse kidney,Rat plasma,Rat liver
细胞定位	Secreted
纯化	Affinity purification

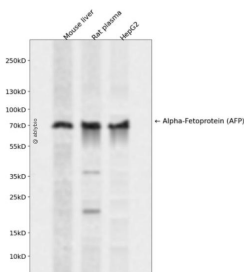
抗原信息

抗原信息	Recombinant fusion protein containing a sequence corresponding to amino acids 395-609 of Alpha-Fetoprotein (AFP) (NP_001125.1).
序列	DKGEEELQKYIQESQALAKRSCGLFQKLGEYYLQNAFLVAYTKKAPQLTSSSELMATRMAATAATCCQLSEDKLLACGEG AADIIIGHLCIRHEMTPVNPVGVCCTSSYANRRPCFSSLVVDETYVPPAFSDDKFIFHKDLCQAQGVALQTMKQEFNLV KQKQPITEEQLEAVIADFSGLLEKCCQGQEQEVCFAEEGQKLISKTRAALGV

靶点信息

研究背景	This gene encodes alpha-fetoprotein, a major plasma protein produced by the yolk sac and the liver during fetal life. Alpha-fetoprotein expression in adults is often associated with hepatoma or teratoma. However, hereditary persistence of alpha-fetoprotein may also be found in individuals with no obvious pathology. The protein is thought to be the fetal counterpart of serum albumin, and the alpha-fetoprotein and albumin genes are present in tandem in the same transcriptional orientation on chromosome 4. Alpha-fetoprotein is found in monomeric as well as dimeric and trimeric forms, and binds copper, nickel, fatty acids and bilirubin. The level of alpha-fetoprotein in amniotic fluid is used to measure renal loss of protein to screen for spina bifida and anencephaly.
基因ID	174
基因名	AFP
Swiss	P02771
别名	AFPD;FETA;HPAFP;AFP

产品验证



Western blot analysis of Alpha-Fetoprotein (AFP) expressed in Mouse liver, Rat plasma, HepG2 using Alpha-Fetoprotein (AFP) Rabbit pAb at 1:1000. Secondary antibody: HRP Goat Anti-Rabbit IgG (H+L) at 1:5000. Lysates/proteins: 30ug per lane. Blocking buffer: 5% non-fat dry milk in TBST. Detection: ECL Enhanced Kit. Exposure time: 120s.

实验步骤

访问官网浏览详情: www.ablybio.cn