

# TET3 Rabbit pAb

货号: **AYP20475**

## 产品信息

|       |   |
|-------|---|
| 反应    | Mouse   |
| 宿主    | Rabbit  |
| 克隆性   | Polyclonal  |
| 预测反应  |   |
| 应用    | WB  |
| 推荐浓度  | <b>WB:</b> 1:500 - 1:2000   |
| 理论分子量 | 77kDa/166kDa/179kDa   |
| 实测分子量 | 179kDa  |
| 形式    | Liquid  |
| 保存条件  | Store at -20°C. Avoid freeze / thaw cycles.<br>Buffer: PBS with 0.01% thiomersal, 50% glycerol, pH 7.3. |
| 偶联物   | Unconjugated  |
| 阳性对照  | mESCs   |
| 细胞定位  | Cytoplasm, Nucleus  |
| 纯化    | Affinity purification   |

## 抗原信息

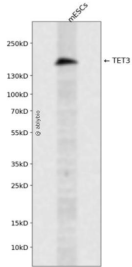
|      |  |
|------|--|
| 抗原信息 | A synthetic peptide corresponding to a sequence within amino acids 1600-1700 of human TET3 (NP_001274420.1). |
| 序列   | EKLWDPFSLEEGPAEEPPSKGAVKEEKGGGGAE EEEEEELWSDSEHNFLDENIGGVAVAPAHGSILIECARRELHATTPLKK<br>PNRCHPTRISLVFYQHKNLN  |

## 靶点信息

|      |  |
|------|--|
| 研究背景 | Members of the ten-eleven translocation (TET) gene family, including TET3, play a role in the DNA methylation process (Langemeijer et al., 2009 [PubMed 19923888]). [supplied by OMIM, Nov 2010] |
| 基因ID | 200424   |
| 基因名  | TET3   |

|       |                     |
|-------|---------------------|
| Swiss | O43151              |
| 别名    | TET3;hCG_40738;TET3 |

## 产品验证



Western blot analysis of TET3 expressed in mESCs using TET3 Rabbit pAb at 1:1000. Secondary antibody: HRP Goat Anti-Rabbit IgG (H+L) at 1:5000. Lysates/proteins: 30ug per lane. Blocking buffer: 5% non-fat dry milk in TBST. Detection: ECL Enhanced Kit. Exposure time: 120s.

## 实验步骤

访问官网浏览详情: [www.ablybio.cn](http://www.ablybio.cn)